

MS+ PROFILE SYSTEMS



a coesia company

FLEXIBLE, SAFE AND EFFICIENT

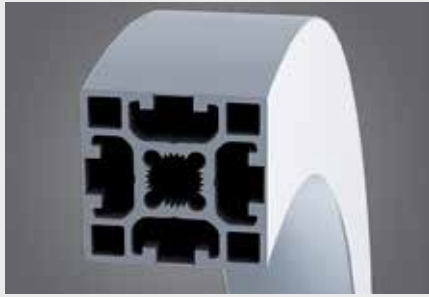
MS⁺ Profile systems provide the universal basis for the modular machine construction system. With MS⁺ Profile systems frames, protection fences, machine enclosures and many other ideas can be realized cost-effectively. According to your needs we deliver components, prefabricated kits or fully assembled systems. The aesthetic design increases the value of your machines and production lines. The systems can be supplied either as components, in prefabricated form or ready-assembled.

The anodized aluminium profiles are scratch-proof and resistant to many weather and factory conditions and chemicals.



The coordinated aluminium profiles, joint elements and a comprehensive range of accessories permits tailor-made solutions for a wide range of different applications. MS⁺ Profile systems are easy to work, quickly installed, provide flexibility and can be re-used at any time.

System	MS 20 ⁺	MS 40 ⁺						MS 50 ⁺
Series	MS 20 ⁺ L (Light)	MS 40 ⁺ L (Light)	MS 40 ⁺ B (Basic)	MS 40 ⁺ H (Heavy)	MS 40 ⁺ U (Ultra)	MS 40 ⁺ BC (Basic closed)	MS 40 ⁺ HC (Heavy closed)	MS 50 ⁺ U (Ultra)
T = One side closed	20 x 20	40 x 40	40 x 16	40 x 40	40 x 40	40 x 40	40 x 40	50 x 50
L = Two sides closed	T20 x 20	40 x 80	40 x 40	40 x 80	40 x 80	40 x 80	40 x 80	50 x 100
U = Three sides closed	L20 x 20		T40 x 40	80 x 80	80 x 80	80 x 80	80 x 80	50 x 150
	20 x 40		L40 x 40		80 x 120			100 x 100
	40 x 40		U40 x 40		80 x 160			100 x 200
			40 x 80					
			L40 x 80					
			80 x 80					
			40 x 120					
Open profiles	X	X	X	X	X			X
Closed profiles						X	X	
Slot pull-out force	3 kN	8 kN	10 kN	16 kN	20 kN	10 kN	16 kN	20 kN



Design

Thanks to the attractive design and perfectly coordinated components, the MS+ profile system is impressive right down to the smallest detail.



Robust

Various sizes of profiles, reinforced T-slots and high strength connectors create strong frames for many industries.



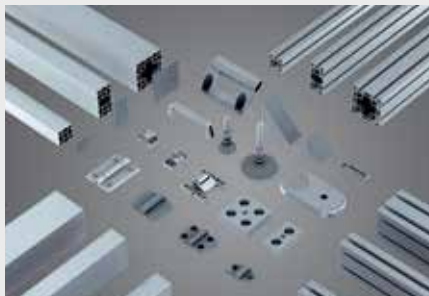
Fast assembly

Connectors are available with or without machining for trouble free and fast assembly.



Easy to clean

The uniform edge radius of 1 mm enables smooth, seamless connections. The closed profiles are easy to clean and meet high design standards.



Flexible

MS+ profile systems consist of open and closed profiles and a large number of components allow you to build any type of enclosure, protection or machine frame.



Safe

Operator safety comes first. The robust design eliminates pinch points and provides a safe environment.



Easy to design

Don't let a bend stop your design. A wide range of components are available, making it easy to find the best solution for all of your needs, including curved beams.



Reducing stock levels

Easy-to-open slot covers replace a wide range of profile variants, thus reducing the amount of items the customer is required to keep in stock.



coesia

coesia.com

Coesia is a group of innovation-based industrial solutions companies operating globally, headquartered in Bologna, Italy.

Coesia's companies are leaders in the sectors of:

- **Advanced automated machinery and materials**
- **Industrial process solutions**
- **Precision gears**

Coesia's customers are leading players in a broad range of industries, including Consumer Goods, Tobacco, Healthcare, Aerospace, Racing & Automotive and Electronics.



a coesia company

info@flexlink.com
flexlink.com