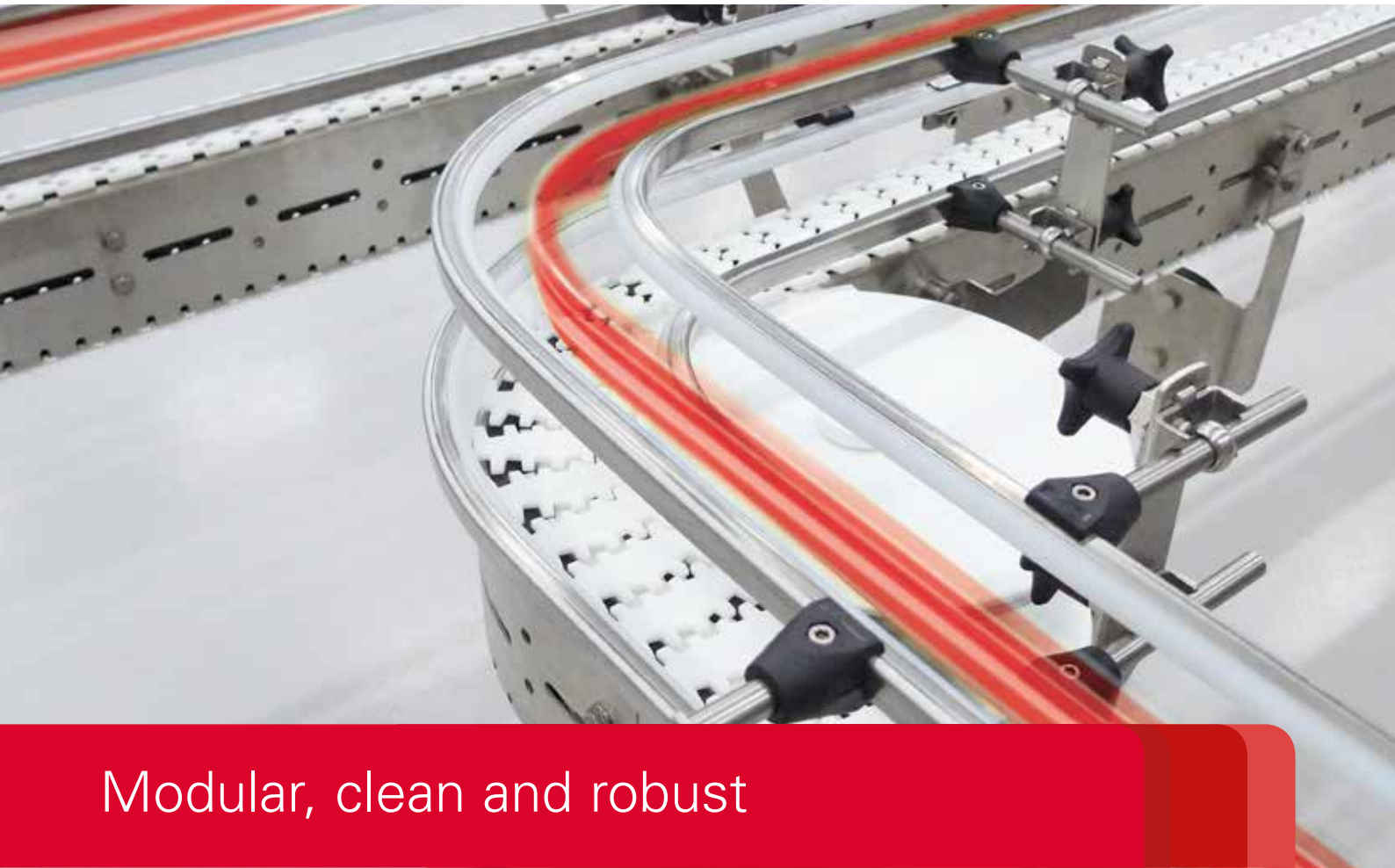


X85X, X180X, X300X



a coesia company



## Modular, clean and robust

### **STAINLESS STEEL CONVEYOR SYSTEMS**

FlexLink's stainless steel conveyors are clean, robust and modular to ensure you get full value from the equipment. The design follows a proactive approach to increase cleanliness, minimizing dirt pockets and maximizing rounded surfaces for better drainage. Extensive research and development results in a sturdy and stable conveyor system that includes a complete range of guide rails and supports.

Standardization simplifies assembly and installation, cutting start-up time and allowing quick and easy line modifications.

### **BENEFITS**

- High speed capable
- High uptime - easy assembly and installation
- Reduced downtime - easy maintenance
- Modular and compact
- Flexible, easy to modify
- Sturdy, robust design
- Easy to clean
- Low noise level
- Operator safety

## Modular, clean and robust

### Modular

The modular design permits easy engineering and flexible line configurations. A wide range of guide rail and support configurations are available, allowing a stable conveyor and secure product handling. Choose between multiple chain configurations, for example roller top, friction top and flexible cleated chain.

### Clean and safe

The conveyors are adapted to the requirements of cleanliness within the packaged food, pharmaceutical and personal care industries. Good drainage, elimination of pockets and open design ensures an easy-to-clean conveyor and runs completely without lubrication systems, even at high speeds.

FlexLink supplies both Clean-In-Place (CIP) solutions and chain washers for a quick and efficient cleaning process. If needed, it is also possible to cover the return chain (Y-version).

Operator safety comes first. Elimination of pinch points and reduced noise level ensure a good working environment. All of our drive units and idlers are safe and designed for low noise.

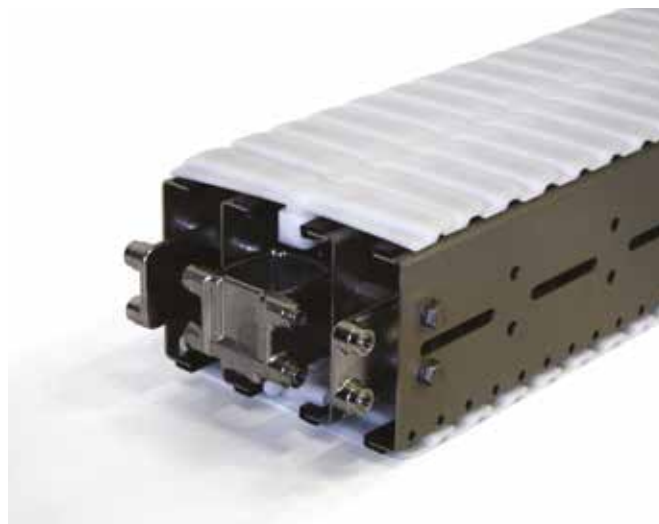
### Robust

With the robust design of beam spacer and connecting brackets, the conveyor achieves impressive sturdiness and torsion resistance.

### Features

- 85/180/300 mm beam width
- Covered return chain available (Y-version)
- Closed beam version for wipe off cleaning available (C-version)
- 120 m/min (X85X) - 60 m/min (X180X/X300X)
- Max. chain tension 1250 N
- Operating temperature -20 C to +60 C
- Chain washer unit or CIP unit

info@flexlink.com  
flexlink.com



a coesia company