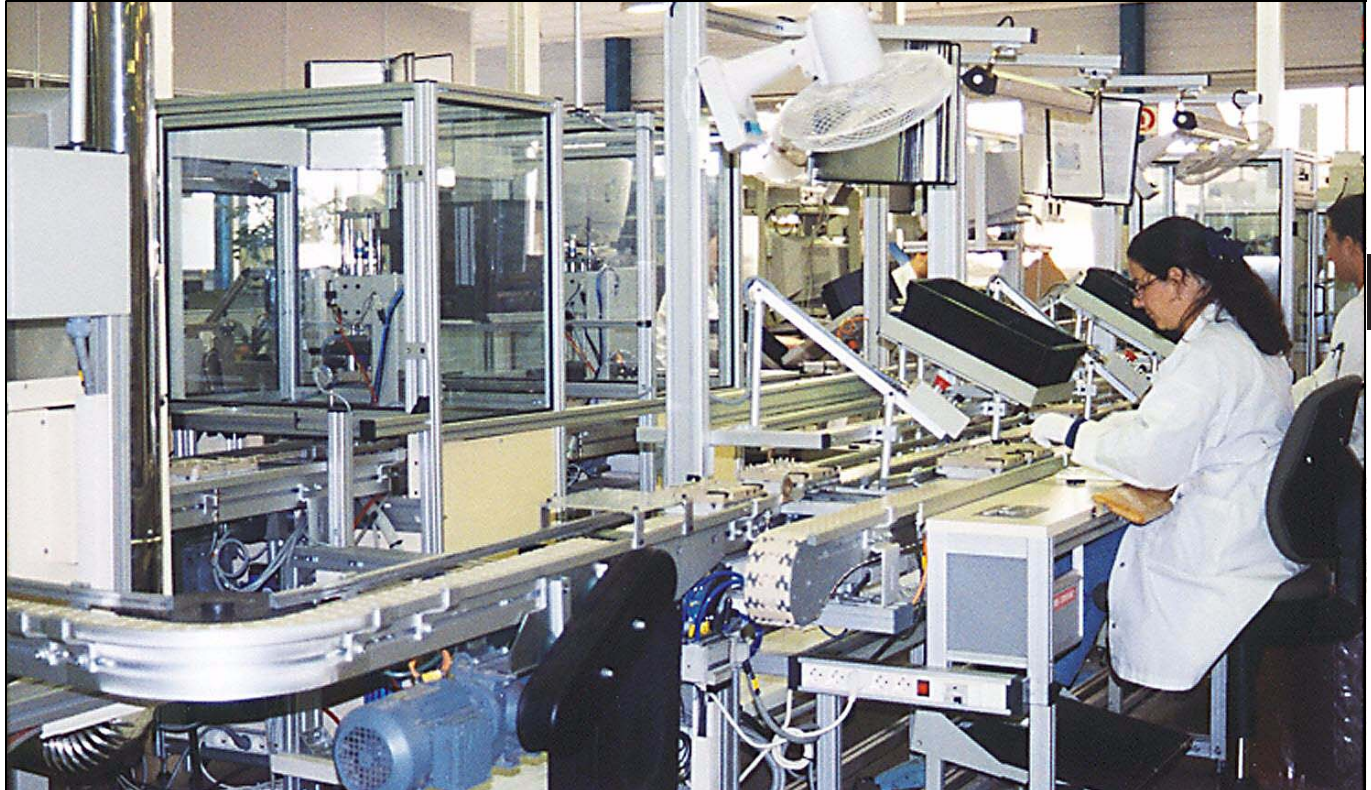


XM pallet handling components

System information



Pallet handling products for conveyor system XM

The pallet handling components for conveyor system XL are designed for loads up to 8 kg. The maximum size of the products on the pallets depends on the shape of the products and the location of their centre of gravity.

Guide rail brackets specifically designed for the pallet track width are available. The system also includes pre-bent guide rails for bends.

Application areas

Examples of application areas are transport and assembly of spark plugs, gear wheels, fuel injectors, hydraulic pistons, headlights, brake cylinders, cellular phones, and harddisk drives.

Technical characteristics

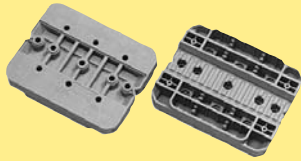
Pallet sizes (W×L×H) 150 mm × 120 mm × 26 mm
150 mm × 150 mm × 26 mm
150 mm × 200 mm × 26 mm
150 mm × 250 mm × 26 mm

Maximum load on pallet. 5–8 kg (including pallet and fixtures)

PO
XS
XL
XLP
XM
XMP
XH
XK
XKP
XB
GR
CS
XT
XC
XF
FST
XMY
XLX
XMX
XHX
GRX
CSX
APX
IDX

Pallets

Pallet 150x120

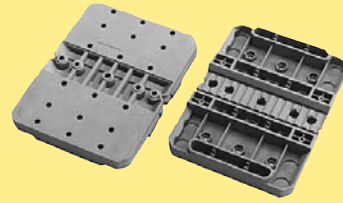


Pallet, length 120 mm

XMP 150x120

Mineral reinforced PPE-PA. Weight: 0,26 kg. Max load 5,0 kg. Max load includes fixture weight.
See page 89 for detailed pallet dimensions

Pallet 150x200

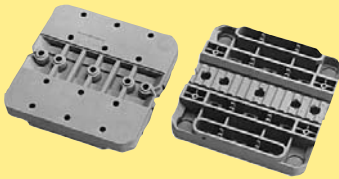


Pallet, length 200 mm

XMP 150x200

Mineral reinforced PPE-PA. Weight: 0,32 kg. Max load 7,0 kg. Max load includes fixture weight.
See page 90 for detailed pallet dimensions

Pallet 150x150

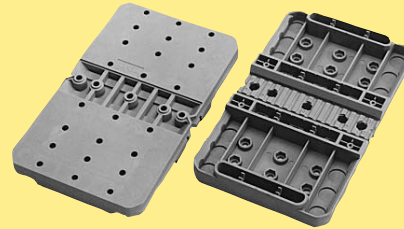


Pallet, length 150 mm

XMP 150x150

Mineral reinforced PPE-PA. Weight: 0,28 kg. Max load 6,0 kg. Max load includes fixture weight.
See page 89 for detailed pallet dimensions

Pallet 150x250

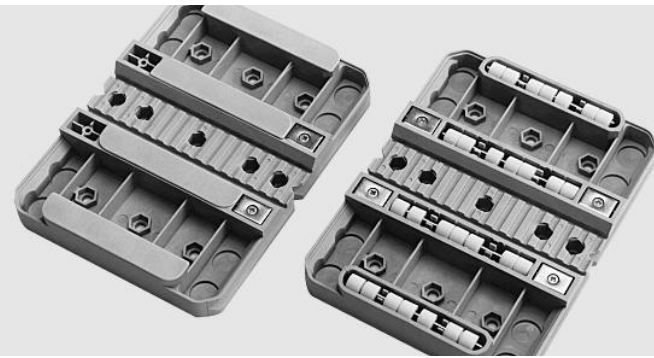


Pallet, length 250 mm

XMP 150x250

Mineral reinforced PPE-PA. Weight: 0,38 kg. Max load 8,0 kg. Max load includes fixture weight.
See page 90 for detailed pallet dimensions

Pallet accessories



Shaft and roller kit



Shaft and roller kit

5056002

Rollers: Polyacetal resin

Shaft: Stainless steel

4 shafts, 28 rollers. 1 kit is needed for each pallet.

Slide block for pallet



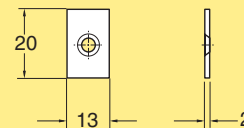
Slide block for pallet

XMPS 100

Polyamide

1 slide block. 4 slide blocks are needed for each pallet.
Note. Must be ordered in multiples of 10

Initiator plate



Initiator plate

XMPL 13x20

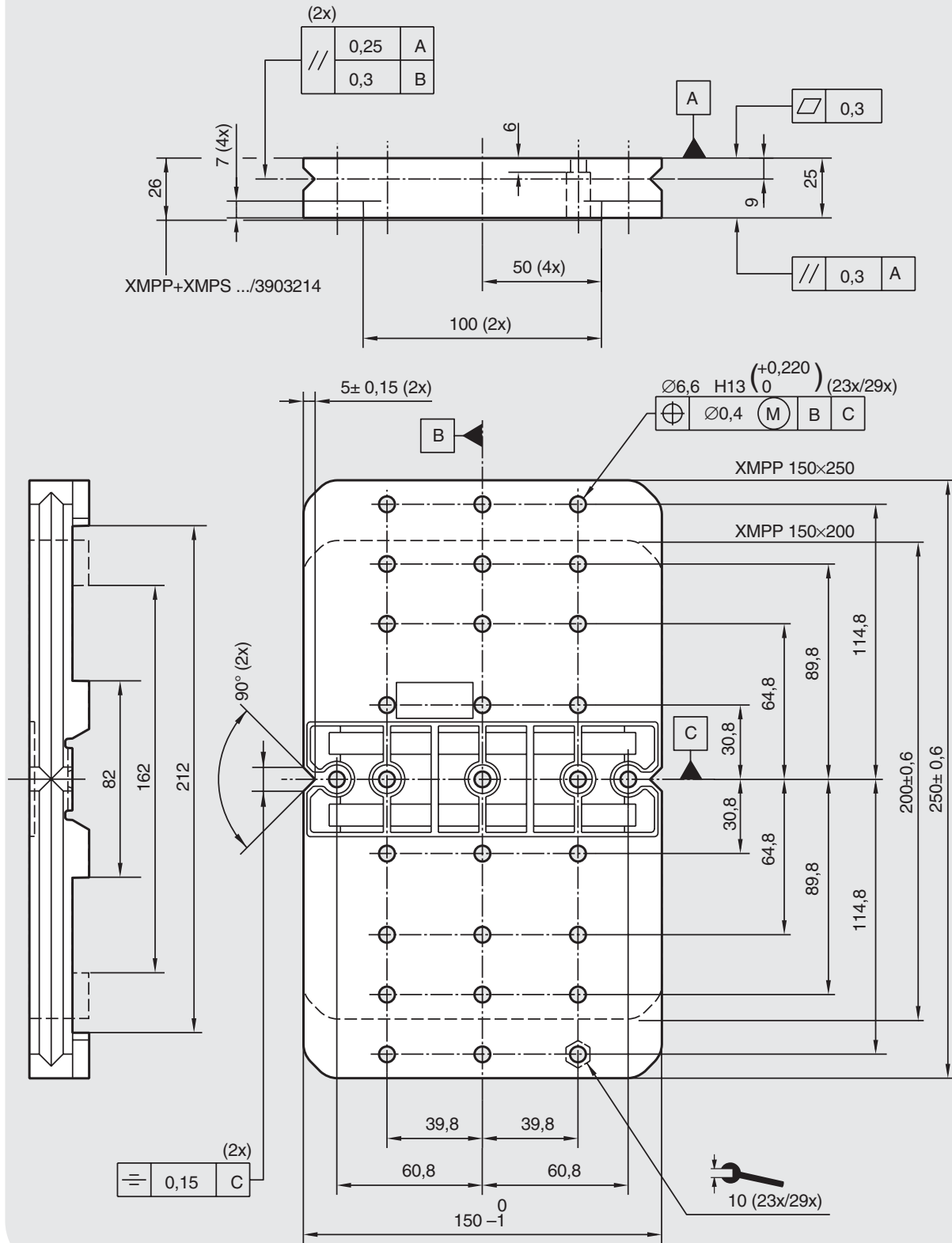
Steel. Including screw

1 to 4 initiator plates can be fitted to a pallet.

Note. Must be ordered in multiples of 25

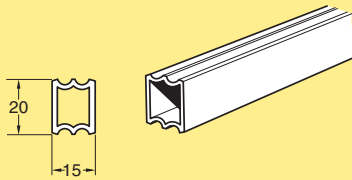


XMPP 150×200
XMPP 150×250



Guide rail

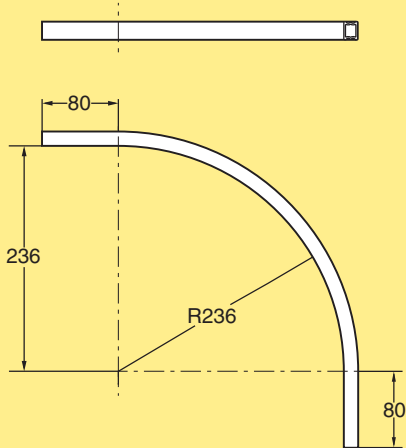
Guide rail 15 mm, aluminium



Straight rail 15 mm
Aluminium, length 3 m
Aluminium, length 6 m

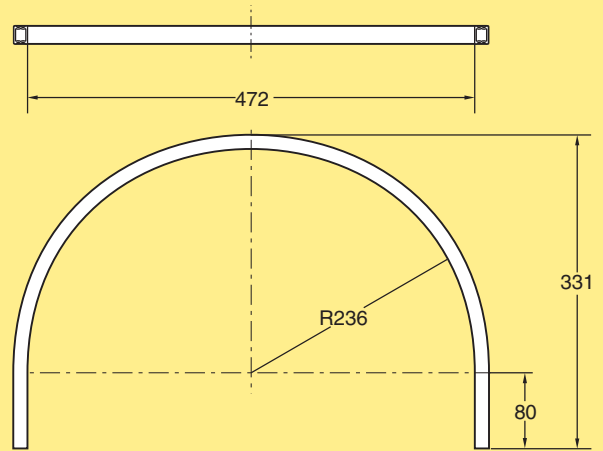
XLRS 3x15
XLRS 6x15

Guide rail for pallets in 90° bends



Outer guide rail for 90° bend **3904899**

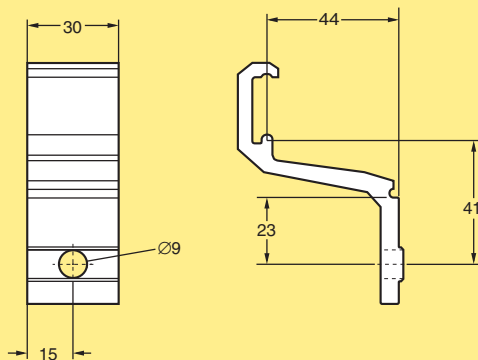
Guide rail for pallets in 180° bends



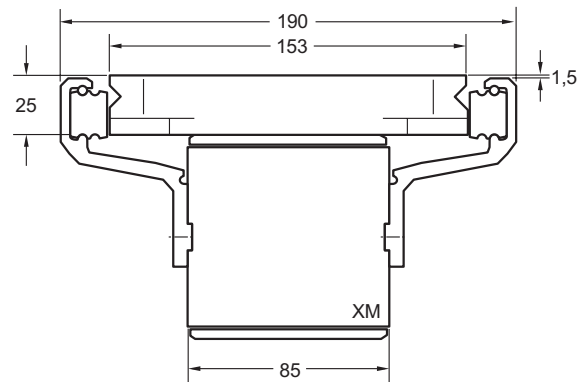
Outer guide rail for 180° bend **3904898**

Guide rail bracket

Fixed guide rail bracket



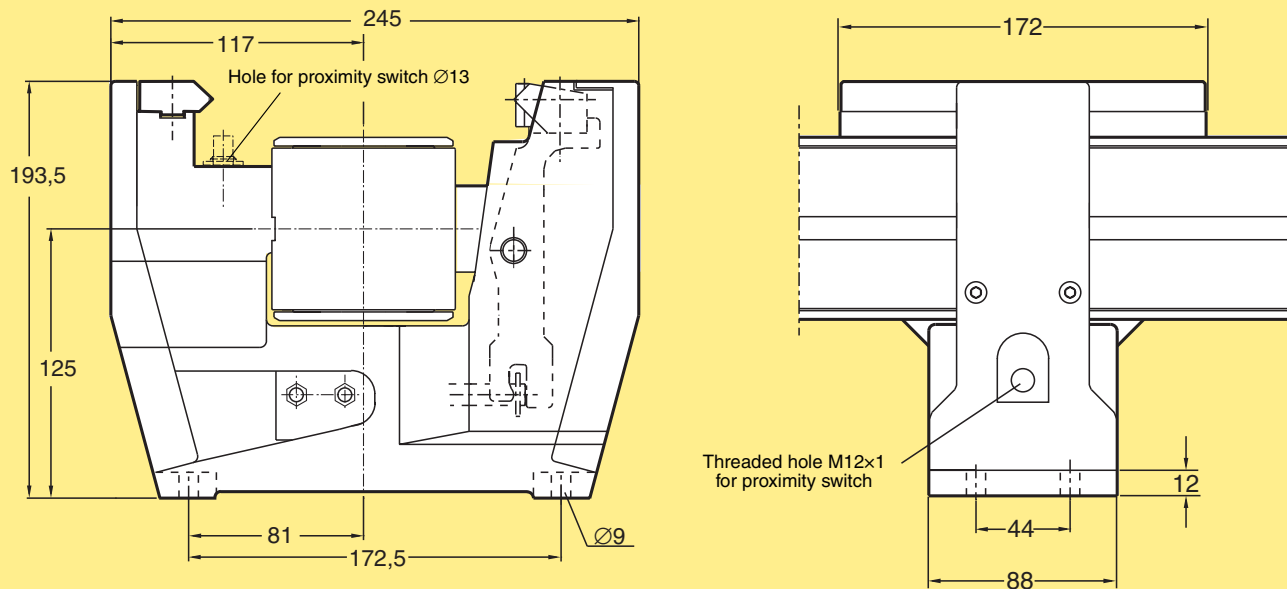
Guide rail bracket **XLRB 49x42**



PO
XS
XL
XLP
XM
XMP
XH
XK
XKP
XB
GR
CS
XT
XC
XF
FST
XMY
XLX
XMX
XHX
GRX
CSX
APX
IDX

Pallet locating station

Pallet locating station



Pneumatic locating station

XMPX 150 A

Frame: cast aluminium. Horizontal wedge: steel. Vertical wedge: hardened steel.
Cylinder connection 6 mm

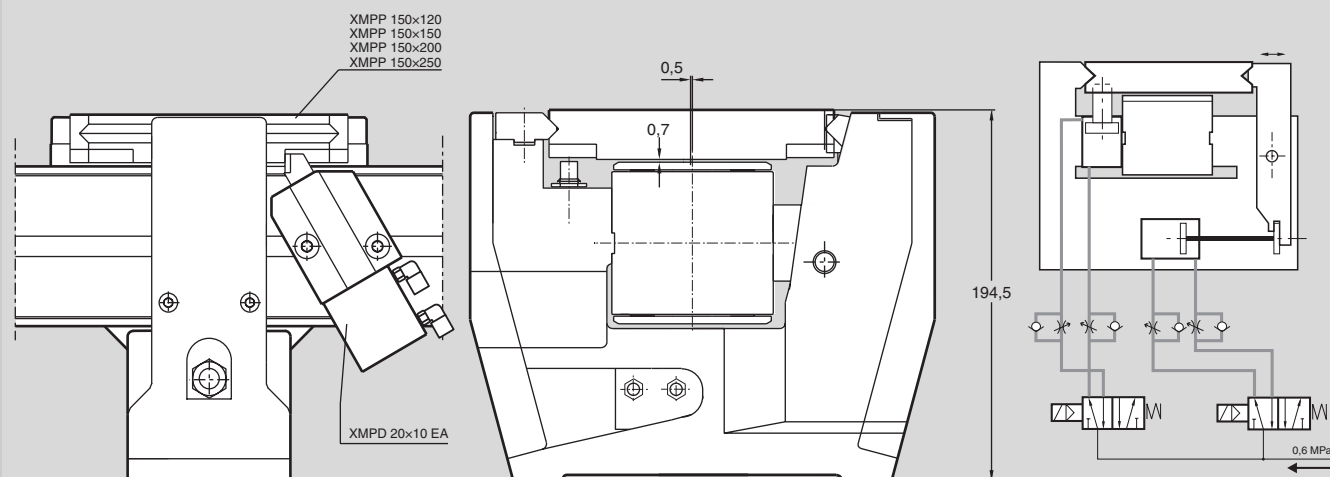
Locating accuracy: $\pm 0,1$ mm. Locating force at 0,6 MPa: 460 N. Max vertical force including pallet weight: 300 N.

T-bolts and nuts for mounting the locating station to the conveyor beam are included. Mounting hardware for connection to a support structure must be ordered separately.

The proximity sensors ($\varnothing 12$ mm, not supplied by FlexLink Systems) must have a minimum effective sensing distance of 2,5 mm to the initiating surface (aluminium).

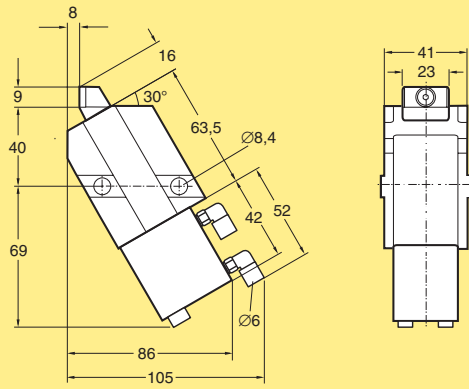
Example: the effective sensing distance for SICK (IM12 sensing range 8 mm) is 5,18 mm. This is calculated as follows: $8 \text{ mm} \times 0,81^* \times 0,45^{**} = 2,92 \text{ mm}$. (*Useful sensing range = $0,81 \times$ nominal sensing range, **Reduction factor for aluminium.)

Locating station with pallet and stop cylinder



Pallet stop cylinder

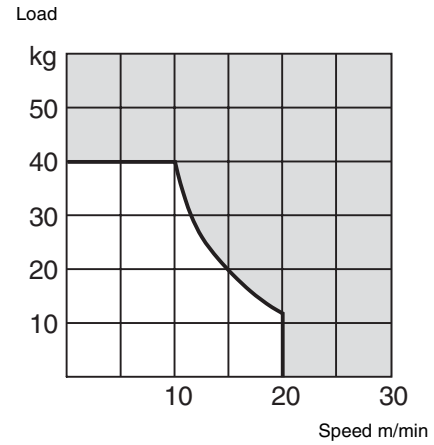
Pallet stop cylinder



Pneumatic stop cylinder
Double-actuated

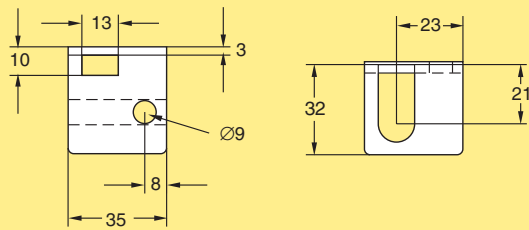
XMPD 20x10 EA

Housing, cover: anodized aluminium
Plunger: polyamide with steel top
Stroke: 10 mm. Theoretical force at 0,6 MPa: 130 N (minus direction)
For use with cylinder position sensor. Including Ø6 pipe connections and the necessary mounting hardware.



The diagram shows the maximum permissible weight of a group of pallets (product weight + pallet weight) that the stop cylinder is capable of stopping, as a function of the conveyor speed.

Bracket for proximity switch

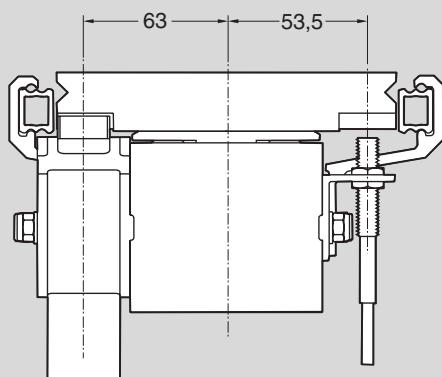


Bracket for proximity switch
Ø12 mm

XMPB 12

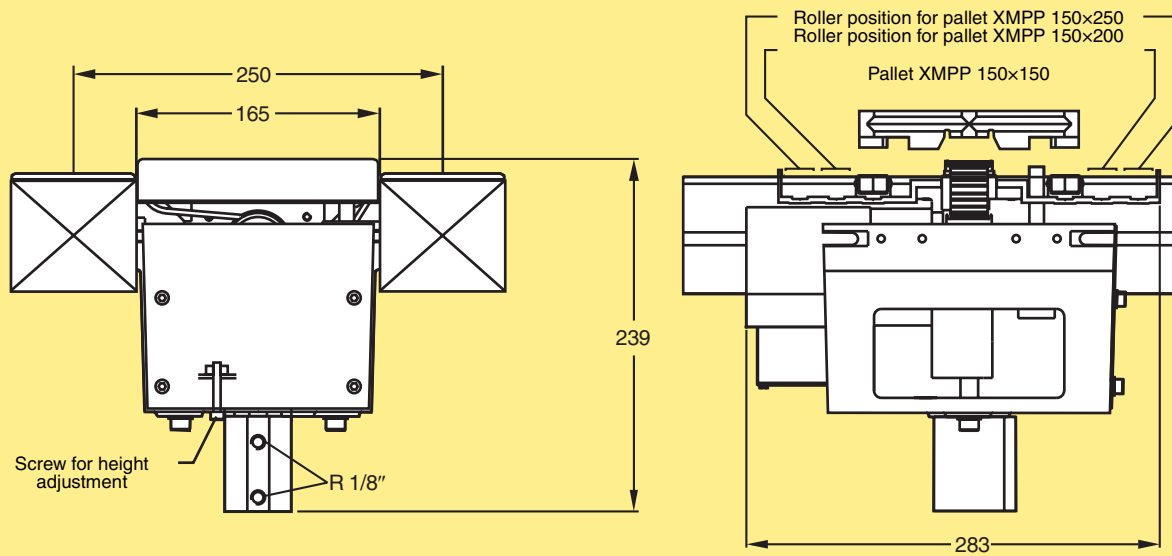
Anodized aluminium

Pallet stop cylinder on conveyor beam



Pallet transfer station

Pallet transfer station

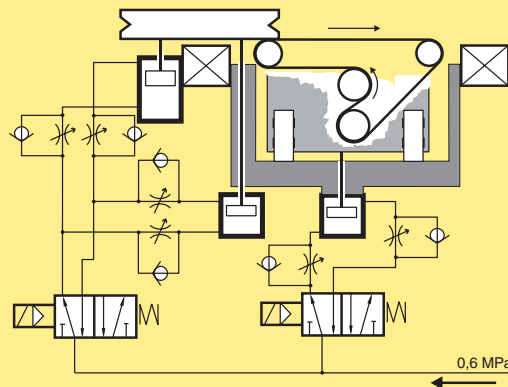


Transfer station

For pallets XMPP 150×150, XMPP 150×200 and XMPP 150×250

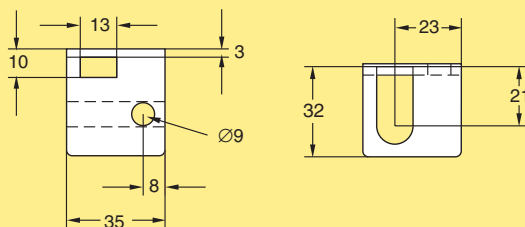
XMPT 150×165

Frame: cast aluminium. Cog belt: rubber. Roller assembly profiles: anodized aluminium. Rollers: acetal resin. Cog belt type: 187 L 100. Belt speed: 110 mm/s (6,8 m/min). Motor: geared motor, 50 Hz: 3-phase, 400 V, 25 W, 60 r/min. Note. The centre of gravity of the load must be located within 25 mm from the pallet centre.



Transfer station accessories

Bracket for proximity switch



Bracket for proximity switch
Ø12 mm

XMPB 12

Integrated stop device

Integrated stop device for reversible operation

3904959

Fasteners

See catalogue section *Fasteners* for details.

T-bolt M8 17 mm

XLAT 17

Nut M8 for T-bolt

XLAN 8

Note. Must be ordered in multiples of 50