

Technical reference

Contents

A. Building a FlexLink system.....	343
B. Materials	344
C. Conveyor noise level	346

D. Selection of variable speed motor and field bus.....	347
E. Drive units- configuration strings.....	350

A. Building a FlexLink system



Modules and components

When designing a FlexLink system the general idea is to take advantage of pre-designed function modules as much as possible. Using the online configurator, it is possible in a very short time to design systems ranging from support to complex wedge modules.

In addition, individual components are available to create special functions, modify existing ones, or to serve as spare parts.

Configuration principles

FlexLinks system is designed to be very flexible with regard to the price-performance requirements. The following performance levels have been established:

Basic

- A conveyor solution for light load/speed applications
- High quality products tailored for low load/speed applications
- Light load with chain pull up to 300 N and speed below 40 m/min

Standard

- A conveyor solution for the average application
- Light load with chain pull up to 800 N and speed below 60 m/min

High performance

- Conveyors for high load or high speed applications
- Light load with chain pull up to 1250 N and speed below 80 m/min
- Low noise
- Low dust generation

High speed

- Conveyors for speeds up to 130 m/min

Conductive

- Conveyors with conductive materials

Tough environment

- Conveyors for applications in dirty environments or with foreign particles or with fluid chemicals
- High wear resistance
- Chemical resistance

Based on these performance levels, the configuration tools point the user to the most suitable combination of features to fulfil the requirements. Configuration recipes are available that guide selection of drive unit version and speed, slide rail material, chain types, bend types, etc. For pallet handling devices, it is possible to specify pallet type, support options, sensors, etc. Price and delivery information is given instantly.

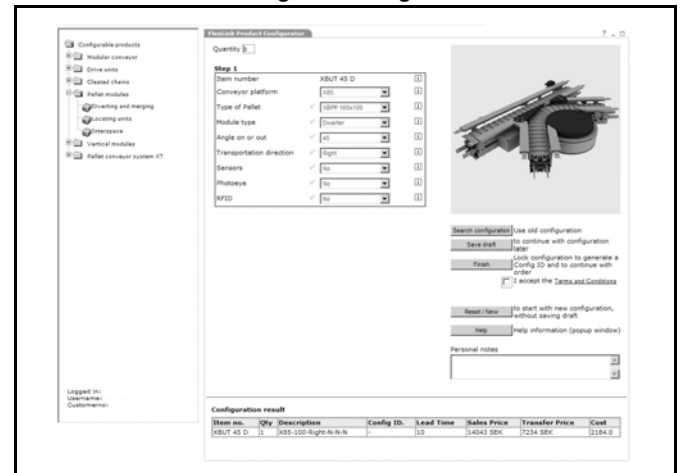
The configuration tool is easy to learn and available around the clock.

My FlexLink

My FlexLink is an extended FlexLink.com and is your portal for simplified engineering and business. It contains:

- Technical Library
- Engineering tools
- Order online
- Online Configurator
- Customer room

To access all above, register and gain immediate access.



B. Materials

Aluminium profiles

Aluminium is very resistant to corrosion in most environments because of the thin natural oxide layer formed on the metal surface when it is exposed to oxygen. The layer is hard and tight, and adheres well. In spite of its limited thickness (0,01 µm) it prevents further oxidation. Under unfavourable conditions, however, corrosion will take place. Normally, this will only affect appearance.

Material specifications

Alloy.....	AA 6063-T6
Density	2700 kg/m ³
Linear expansion	23 × 10 ⁻⁶ / °C
Modulus of elasticity	70 000 N/mm ²
Shear modulus	27 000 N/mm ²

Tensile strength

Yield point R _p (σ _{0,2})	200 N/mm ²
Ultimate strength R _m (σ _B)	230 N/mm ²
Elongation A ₅ (δ ₅)	12 %
Anodization layer thickness	10 µm

Section cuts are not anodized, unless otherwise specified.

Compatible with most common chemicals

The FlexLink conveyor components can withstand lengthy contact with most chemicals used in normal workshop environments. It is, however, necessary to avoid acids with pH lower than 4, bases with pH above 9, and lengthy exposure to chlorinated hydrocarbons such as trichloroethylene.

The following tables specify the resistance of the materials used in FlexLink components to various chemicals. For some chemicals, the reactions depend on concentration and form of the chemical. A higher concentration of an acid will cause more swelling of the material subjected to it. Also, the liquid form of a gas results in more brisk reactions.

Legend

1 indicates very high resistance, whereas 4 indicates an unsuitable combination. "–" means that no data is available.

Acids

Chemical agent	POM	PA	PA-PE	PVDF	HDPE	UHMW-PE	PEBAX	Alum
Acetic acid	3	4	4	1	3	1	–	2
Benzoic acid	3	4	4	1	1	1	–	4
Boric acid	3	2	2	1	1	1	–	2
Citric acid	3	2	2	1	2	1	–	2
Chromic acid	4	4	4	1	1	1	–	3
Hydrofluoric acid	4	4	4	1	1	1	–	4
Hydrochloric acid	4	4	4	1	1	1	–	3
Hydrocyanic acid	4	4	4	1	2	1	–	1
Nitric acid	4	4	4	1	4	1	–	3
Oleic acid	3	2	2	1	3	1	–	1
Oxalic acid	4	2	2	1	1	1	–	2
Perchlorid acid	4	4	4	1	1	1	–	3
Phosphoric acid	4	4	4	1	1	1	–	3
Phtalic acid	4	2	2	1	1	1	–	–
Sulphuric acid	4	4	4	1	2	1	1	3
Tannic acid	3	–	–	1	1	1	–	–
Tartaric acid	3	2	2	1	1	1	–	1

Basic compounds

Chemical agent	POM	PA	PA-PE	PVDF	HDPE	UHMW-PE	PEBAX	Alum
Ammonia (solution)	1	2	2	1	1	1	–	2
Calcium hydroxide	1	2	2	1	1	1	–	4
Caustic soda	1	2	2	1	1	1	1	3
Potassium hydroxide	1	2	2	1	1	1	–	4

Gases

Chemical agent	POM	PA	PA-PE	PVDF	HDPE	UHMW-PE	PEBAX	Alum
Carbon dioxide	3	1	1	1	1	1	–	1
Carbon monoxide	2	1	1	1	1	1	–	1
Chlorine (dry)	2	4	4	1	3	3	–	1
Chlorine (wet)	4	4	4	1	4	4	–	4
Hydrogen sulphide	3	1	1	1	2	1	–	1
Sulphur dioxide (dry)	2	3	3	1	2	1	–	1
Sulphur dioxide (wet)	4	4	4	1	2	1	–	3

Materials (continued)

Organic compounds and solvents

Chemical agent	POM	PA	PA-PE	PVDF	HDPE	UHMW-PE	PEBAX	Alum
Acetone	1	1	1	1	4	1	3	1
Aniline	2	3	3	1	3	1	-	1
Benzene	1	2	2	1	4	4	3	1
Benzine	2	2	2	1	3	3	-	1
Butyl alcohol	2	2	2	1	2	1	-	1
Carbon disulphide	1	2	2	1	3	3	-	1
Carbon tetrachloride	1	1	1	1	3	3	-	2
Chlorobenzene	1	1	1	1	4	4	-	-
Chloroform	1	3	3	1	4	4	-	-
Ethyl acetate	1	2	2	1	2	1	-	1
Ethyl alcohol	1	2	2	1	1	1	-	1
Ethyl ether	1	2	2	1	4	3	-	1
Formalin	2	2	2	1	1	1	-	1
Heptane	2	1	1	1	2	2	-	-
Methyl alcohol	1	2	2	1	1	1	-	2
Methyl ethyl ketone	1	1	1	1	4	2	4	2
Nitrobenzene	2	2	2	1	3	2	-	1
Phenol	3	4	4	1	2	1	-	1
Toluene	1	2	2	1	4	4	-	-
White spirit	-	2	2	2	4	4	-	-

Salts

Chemical agent	POM	PA	PA-PE	PVDF	HDPE	UHMW-PE	PEBAX	Alum
Acid salts	2	3	3	1	1	1	-	-
Basic salts	1	2	2	1	1	1	-	-
Neutral salts	1	2	2	1	1	1	-	-
Potassium bicarbonate	2	2	2	1	2	1	-	1
Potassium permanganate	2	4	4	1	2	1	-	1
Sodium cyanide	2	2	2	1	2	1	-	4
Sodium hypochlorite	3	4	4	1	2	1	-	4

Chemical test

If you are doubtful about whether our materials will withstand your special environment, you should perform a chemical test. The following procedure, which tests the absorption of the material by measuring the swelling, is suitable for plastic materials. It should be performed at two temperatures, 20 °C and 60 °C. The 60 °C test represents long term exposure at room temperature.

- 1 Put a sample of the material into the chemical solution.
- 2 Measure the change in weight and length after 1, 2, 4, and 7 days in the solution. If the relative change of weight, length, or other geometric change exceeds 1 %, the test is considered negative, i.e. the chemical is not compatible with the material.

Static electricity

Low conductivity

The standard plastic materials used for conveyors all have low electrical conductivity. This means that static electricity can build up on the conveyor. If the chain runs on plastic slide rails, no inherent discharge path exists for the static electricity.

When a conveyor is running under normal operating conditions but without products, the following static build-up can be measured:

At the drive unit.....	2000–2500 V
At the idler end unit.....	400–500 V
At a wheel bend.....	400–500 V
At a straight section.....	300–400 V

Depending on the shape and material, a product running on the conveyor can also build up static electricity. The worst case is with accumulated products. Discharge is normally taking place when the products are transferred to or from the conveyor.

In static sensitive applications, a number of measures can be taken to reduce the risk of excessive static charges.

- 1 Ensure that the relative humidity is minimum 40 %.
- 2 Install static discharge wipers immediately before sensitive points on the conveyor.

Components for static sensitive environments

Some FlexLink chains, slide rail, and guide rail cover can be ordered in carbon loaded or ISD versions. The carbon loaded material has high conductivity whereas the ISD material is dissipative.

Contact your FlexLink Systems representative for additional information.

Run-in period

Two to three weeks are usually enough as a run-in period. During this time, the conveyor should be cleaned a couple of times, to remove dust. After run-in, wear will be minimal, unless particles from the product or process reach the conveyor continuously.

Chain elongation

Especially during the run-in period, and if the load is heavy, the conveyor chain will slowly increase in length. This effect will be most obvious for long conveyors. After continuous operation for two weeks, it is often possible to remove a couple of chain links. After this period, we recommend a check every 3–6 months.

Ultra-violet light

The plastic material used in the FlexLink conveyor chain will deteriorate slowly if exposed to strong ultra-violet radiation from industrial UV sources.

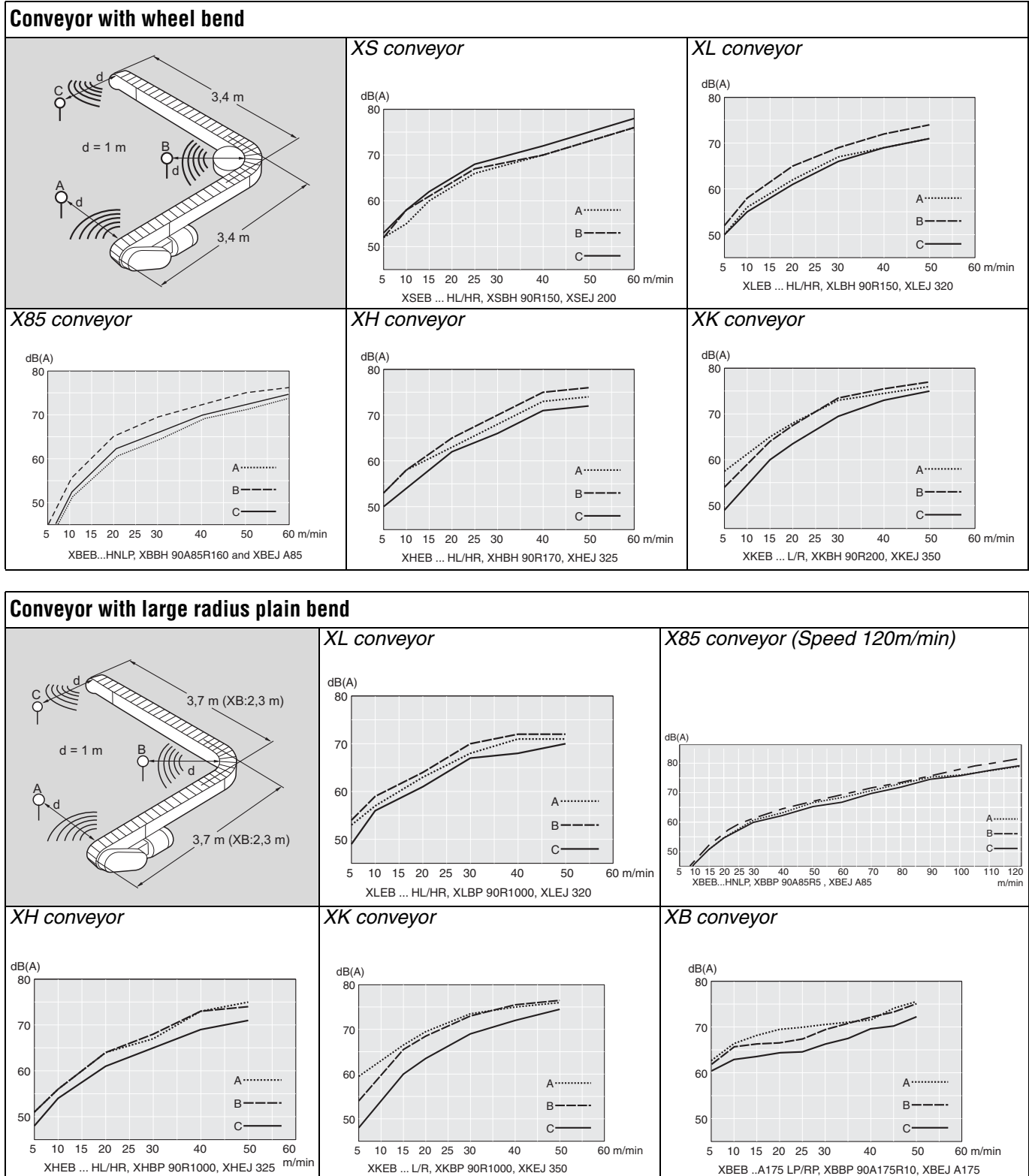
C. Conveyor noise level

Introduction

The noise generated by the conveyor chain will decrease after a few days of operation. Generally, a higher speed will result in a higher noise level, though still less than the general noise in a factory environment. At high speeds, large-radius plain bends are quieter than wheel bends. The actual noise level depends on several factors: the

product on the conveyor, the installation premises, surrounding equipment, and the conveyor layout and dimensions

Typical noise levels for a conveyor with an end drive unit are shown in the following tables. The noise level was measured at three points for each conveyor type, at a distance of 1 m from drive unit (A), bend (B), and idler end unit (C), at the same level as the top of the conveyor.



D. Selection of variable speed motor and field bus

Introduction

FlexLink offers a wide variety of motor alternatives for drive units. For variable speed drives, the on-line configurator software (see the Flex-Link website) is the recommended way of matching the project requirements to a suitable choice of motor and fieldbus interface. For occasions when this is not possible this section provides guidelines for selection.



Selection sequence

Define the properties of the drive unit without motor (the 0-unit). This variable speed offer is limited to end drive units with direct drive. Please note that 0-units type Compact cannot be equipped with these variable speed motors.

- 1 Select conveyor platform (XS, XL, etc.)
- 2 Select motor position (left-hand or right-hand side)
- 3 Decide if a slip clutch is needed
- 4 Determine the type of gearbox

Two choices of gearbox are possible: WA20 and SA37. See the table to the right.

- 5 Based on the desired speed range, the type of motor can now be determined from the diagrams. See paragraph 6. Data for the motors can be found in the tables on the next pages. Note the following:

The rotational speeds (rpm) in the diagrams and tables are valid for the recommended frequency range 20 Hz to 50 Hz*/20 Hz to 60 Hz**.

If necessary it is possible to extend the range

- down to 10 Hz*/12 Hz** (motor temperature will rise)
- higher than 50 Hz*/60 Hz** (will result in lower outgoing torque, and the SEW warranty will not be valid).

Left-hand version of motor means that the motor package is assembled to fit a left-hand (L) 0-unit.

Right-hand version means that it will fit a right-hand (R) 0-unit.

The diagrams are labelled Nm (newtonmeter) for torque T, and rpm (revolutions per minute) for rotational speed N. To convert rpm to actual conveyor chain speed, it is necessary to take the chain pitch and the number of teeth on the drive wheel into consideration. This results in a *speed factor* (see table) which is different for different drive types.

Speed calculation

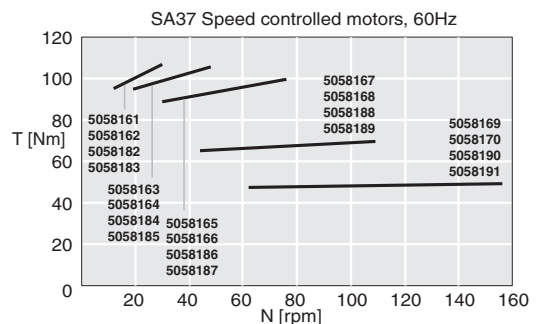
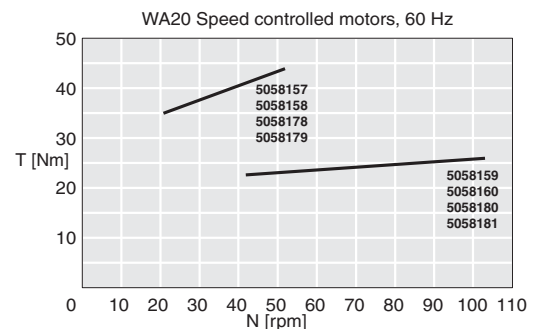
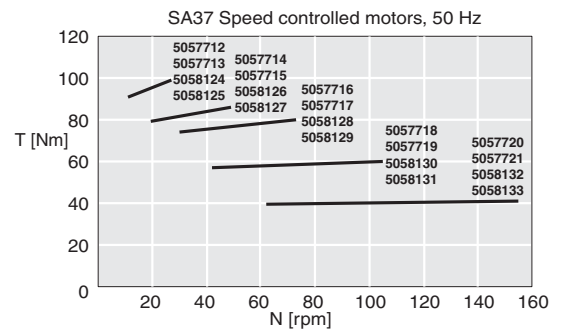
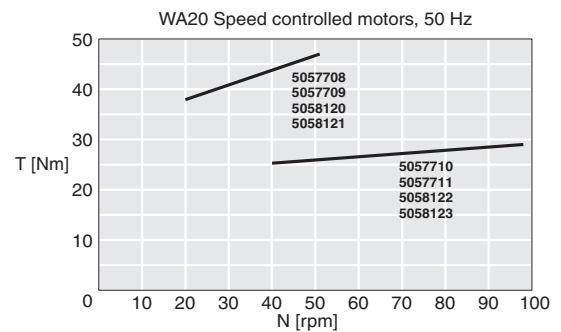
$$N \text{ rpm} = \frac{\text{Desired speed (m/min)}}{\text{Speed factor}}$$

- * 50 Hz motors
- ** 60 Hz motors

Speed factors

0-unit	Clutch	Gear type	Speed factor m/revolution
XSEB 0 HL(A)P/HR(A)P	yes	SA37	0,41
XLEB 0 HL(A)P/HR(A)P	yes	SA37	0,41
XLEB 0 MNL(A)P/MNR(A)P	no	WA20	0,28
XMEB 0 HL(A)P/HR(A)P	yes	SA37	0,40
XMEB 0 MNL(A)P/MNR(A)P	no	WA20	0,30
XHEB 0 HL(A)P/HR(A)P	yes	SA37	0,43
XBEB 0 L(A)P/R(A)P	no	SA37	0,40
XBEB 0 LP(A)B/RP(A)B	yes	SA37	0,40

- 6 Select your desired motor (data: see following pages, for X85 use Online configurator)



D. Selection of variable speed motor and field bus (continued)

Motor data – 50 Hz motors

Gearmotors type WA20 with frequency inverter

Item number	Item name	Description
5057708	Gearmotor speed control	WA20DT71D4/MM03, ISO, N=10–51 rpm, T=35–47 Nm, Left
5057709	Gearmotor speed control	WA20DT71D4/MM03, ISO, N=10–51 rpm, T=35–47 Nm, Right
5057710	Gearmotor speed control	WA20DT71D4/MM03, ISO, N=20–98 rpm, T=24–29 Nm, Left
5057711	Gearmotor speed control	WA20DT71D4/MM03, ISO, N=20–98 rpm, T=24–29 Nm, Right

Gearmotors type WA20 with frequency inverter and hybrid cable

Item number	Item name	Description
5058120	Gearmotor speed control cable	WA20DT71D4/MM03/KPF6 1,5 m, ISO, N=10–51 rpm, T=35–47 Nm, Left
5058121	Gearmotor speed control cable	WA20DT71D4/MM03/KPF6 1,5 m, ISO, N=10–51 rpm, T=35–47 Nm, Right
5058122	Gearmotor speed control cable	WA20DT71D4/MM03/KPF6 1,5 m, ISO, N=20–98 rpm, T=24–29 Nm, Left
5058123	Gearmotor speed control cable	WA20DT71D4/MM03/KPF6 1,5 m, ISO, N=20–98 rpm, T=24–29 Nm, Right

Gearmotors type SA37 with frequency inverter

Item number	Item name	Description
5057712	Gearmotor speed control	SA37DT71D4/MM03, ISO, N=5.5–27 rpm, T=85–99 Nm, Left
5057713	Gearmotor speed control	SA37DT71D4/MM03, ISO, N=5.5–27 rpm, T=85–99 Nm, Right
5057714	Gearmotor speed control	SA37DT80K4/MM05, ISO, N=9.7–49 rpm, T=77–86 Nm, Left
5057715	Gearmotor speed control	SA37DT80K4/MM05, ISO, N=9.7–49 rpm, T=77–86 Nm, Right
5057716	Gearmotor speed control	SA37DT80N4/MM07, ISO, N=15–73 rpm, T=72–80 Nm, Left
5057717	Gearmotor speed control	SA37DT80N4/MM07, ISO, N=15–73 rpm, T=72–80 Nm, Right
5057718	Gearmotor speed control	SA37DT80N4/MM07, ISO, N=21–105 rpm, T=56–60 Nm, Left
5057719	Gearmotor speed control	SA37DT80N4/MM07, ISO, N=21–105 rpm, T=56–60 Nm, Right
5057720	Gearmotor speed control	SA37DT80N4/MM07, ISO, N=31–155 rpm, T=39–41 Nm, Left
5057721	Gearmotor speed control	SA37DT80N4/MM07, ISO, N=31–155 rpm, T=39–41 Nm, Right

Gearmotors type SA37 with frequency inverter and hybrid cable

Item number	Item name	Description
5058124	Gearmotor speed control cable	SA37DT71D4/MM03/KPF6 1,5 m, ISO, N=5.5–27 rpm, T=85–99 Nm, Left
5058125	Gearmotor speed control cable	SA37DT71D4/MM03/KPF6 1,5 m, ISO, N=5.5–27 rpm, T=85–99 Nm, Right
5058126	Gearmotor speed control cable	SA37DT80K4/MM05/KPF6 1,5 m, ISO, N=9.7–49 rpm, T=77–86 Nm, Left
5058127	Gearmotor speed control cable	SA37DT80K4/MM05/KPF6 1,5 m, ISO, N=9.7–49 rpm, T=77–86 Nm, Right
5058128	Gearmotor speed control cable	SA37DT80N4/MM07/KPF6 1,5 m, ISO, N=15–73 rpm, T=72–80 Nm, Left
5058129	Gearmotor speed control cable	SA37DT80N4/MM07/KPF6 1,5 m, ISO, N=15–73 rpm, T=72–80 Nm, Right
5058130	Gearmotor speed control cable	SA37DT80N4/MM07/KPF6 1,5 m, ISO, N=21–105 rpm, T=56–60 Nm, Left
5058131	Gearmotor speed control cable	SA37DT80N4/MM07/KPF6 1,5 m, ISO, N=21–105 rpm, T=56–60 Nm, Right
5058132	Gearmotor speed control cable	SA37DT80N4/MM07/KPF6 1,5 m, ISO, N=31–155 rpm, T=39–41 Nm, Left
5058133	Gearmotor speed control cable	SA37DT80N4/MM07/KPF6 1,5 m, ISO, N=31–155 rpm, T=39–41 Nm, Right

Fieldbus interface

Select the appropriate interface: hybrid cables and fieldbus interfaces. ASi, Profibus, and DeviceNet type fieldbus interfaces are available, each in two sizes: Z3 and Z6. Type Z6 includes a power switch.

* 2 digital inputs included. M12 connection

** 4 digital inputs and 2 digital outputs included. M12 connection.

Item number	Item name	Description
5057731	Connector cable	Hybrid cable
5057733	Fieldbus interface*	Z.3 ASi
5057734	Fieldbus interface**	Z.3 Profibus
5057735	Fieldbus interface**	Z.3 DeviceNet
5057736	Fieldbus interface*	Z.6 ASi
5057737	Fieldbus interface**	Z.6 Profibus
5057738	Fieldbus interface**	Z.6 DeviceNet

D. Selection of variable speed motor and field bus (continued)

Motor data – 60 Hz motors

Gearmotors type WA20 with frequency inverter

Item number	Item name	Description
5058157	Gearmotor speed control	WA20DT71D4/MM03, US, N=8,6–52 rpm, T=34–46 Nm, Left
5058158	Gearmotor speed control	WA20DT71D4/MM03, US, N=8,6–52 rpm, T=34–46 Nm, Right
5058159	Gearmotor speed control	WA20DT71D4/MM03, US, N=17–103 rpm, T=21,5–26 Nm, Left
5058160	Gearmotor speed control	WA20DT71D4/MM03, US, N=17–103 rpm, T=21,5–26 Nm, Right

Gearmotors type WA20 with frequency inverter and hybrid cable

Item number	Item name	Description
5058178	Gearmotor speed control cable	WA20DT71D4/MM03/KPF6 1,5 m, US, N=8,6–52 rpm, T=34–46 Nm, Left
5058179	Gearmotor speed control cable	WA20DT71D4/MM03/KPF6 1,5 m, US, N=8,6–52 rpm, T=34–46 Nm, Right
5058180	Gearmotor speed control cable	WA20DT71D4/MM03/KPF6 1,5 m, US, N=17–103 rpm, T=21,5–26 Nm, Left
5058181	Gearmotor speed control cable	WA20DT71D4/MM03/KPF6 1,5 m, US, N=17–103 rpm, T=21,5–26 Nm, Right

Gearmotors type SA37 with frequency inverter

Item number	Item name	Description
5058161	Gearmotor speed control	SA37DT71D4/MM03, US, N=4,4–27 rpm, T=77–90 Nm, Left
5058162	Gearmotor speed control	SA37DT71D4/MM03, US, N=4,4–27 rpm, T=77–90 Nm, Right
5058163	Gearmotor speed control	SA37DT80K4/MM05, US, N=8–48 rpm, T=78–87 Nm, Left
5058164	Gearmotor speed control	SA37DT80K4/MM05, US, N=8–48 rpm, T=78–87 Nm, Right
5058165	Gearmotor speed control	SA37DT80N4/MM07, US, N=13–76 rpm, T=70–78 Nm, Left
5058166	Gearmotor speed control	SA37DT80N4/MM07, US, N=13–76 rpm, T=70–78 Nm, Right
5058167	Gearmotor speed control	SA37DT80N4/MM07, US, N=18–109 rpm, T=54–58 Nm, Left
5058168	Gearmotor speed control	SA37DT80N4/MM07, US, N=18–109 rpm, T=54–58 Nm, Right
5058169	Gearmotor speed control	SA37DT80N4/MM07, US, N=29–156 rpm, T=39–41 Nm, Left
5058170	Gearmotor speed control	SA37DT80N4/MM07, US, N=29–156 rpm, T=39–41 Nm, Right

Gearmotors type SA37 with frequency inverter and hybrid cable

Item number	Item name	Description
5058182	Gearmotor speed control cable	SA37DT71D4/MM03/KPF6 1,5 m, US, N=4,4–27 rpm, T=77–90 Nm, Left
5058183	Gearmotor speed control cable	SA37DT71D4/MM03/KPF6 1,5 m, US, N=4,4–27 rpm, T=77–90 Nm, Right
5058184	Gearmotor speed control cable	SA37DT80K4/MM05/KPF6 1,5 m, US, N=8–48 rpm, T=78–87 Nm, Left
5058185	Gearmotor speed control cable	SA37DT80K4/MM05/KPF6 1,5 m, US, N=8–48 rpm, T=78–87 Nm, Right
5058186	Gearmotor speed control cable	SA37DT80N4/MM07/KPF6 1,5 m, US, N=13–76 rpm, T=70–78 Nm, Left
5058187	Gearmotor speed control cable	SA37DT80N4/MM07/KPF6 1,5 m, US, N=13–76 rpm, T=70–78 Nm, Right
5058188	Gearmotor speed control cable	SA37DT80N4/MM07/KPF6 1,5 m, US, N=18–109 rpm, T=54–58 Nm, Left
5058189	Gearmotor speed control cable	SA37DT80N4/MM07/KPF6 1,5 m, US, N=18–109 rpm, T=54–58 Nm, Right
5058190	Gearmotor speed control cable	SA37DT80N4/MM07/KPF6 1,5 m, US, N=29–156 rpm, T=39–41 Nm, Left
5058191	Gearmotor speed control cable	SA37DT80N4/MM07/KPF6 1,5 m, US, N=29–156 rpm, T=39–41 Nm, Right

Fieldbus interface

Select the appropriate interface: hybrid cables and fieldbus interfaces. ASi, Profibus, and DeviceNet type fieldbus interfaces are available, each in two sizes: Z3 and Z6. Type Z6 includes a power switch.

* 2 digital inputs included. M12 connection

** 4 digital inputs and 2 digital outputs included. M12 connection.

Item number	Item name	Description
5057731	Connector cable	Hybrid cable
5057733	Fieldbus interface*	Z.3 ASi
5057734	Fieldbus interface**	Z.3 Profibus
5057735	Fieldbus interface**	Z.3 DeviceNet
5057736	Fieldbus interface*	Z.6 ASi
5057737	Fieldbus interface**	Z.6 Profibus
5057738	Fieldbus interface**	Z.6 DeviceNet

E. Drive units- configuration strings

Here follows two examples of text strings obtained from the configurator, with explanations.

Drive unit with fixed speed motor

Item no	A	B	C	D	E	G	H	I
XBEB A85	HNP	- L	- G	- V4	- SA37	- 50/230	- 0,18kW	- TF

Drive unit with variable speed motor

Item no	A	B	D	E	F	G	J	K
XBEB A85	MNPV	- L	- V6-15	- WA20	- MM03	- 50/380-500	- C	- A3

Item no - Drive type

xxEBx:	End drive
xxEC:	Catenary drive
xxEYx:	Transfer
xxER:	Intermediate drive
xxEW:	Horizontal bend drive
xxEB DD:	Double drive

G – Electrical environment

50/230:	50 Hz, 230 V
50/400:	50 Hz, 400 V
60/230:	60 Hz, 230 V
60/460:	60 Hz, 460 V
60/575:	60 Hz, 575 V
50/380-500:	SEW Movimot variable speed motor
60/380-500:	SEW Movimot variable speed motor

A – 0-Unit

CNP: Compact, direct drive, no slip clutch
MNP: Medium, direct drive, no slip clutch
HNP: Heavy, direct drive, no slip clutch
HP: Heavy, direct drive, slip clutch
H: Heavy, suspended motor, slip clutch
....V: Variable speed

B – Motor position

L: Left
R: Right

C – End drive with guided chain

G: Guided (position is omitted for non-guided)

D – Speed

V...: Fixed speed... m/min
V... - ...: Variable speed range-... m/min

E – Gearbox

WA10: SEW motor type WA10
WA20: SEW motor type WA20
S37: SEW motor type S37
SA37: SEW motor type SA37

F – Movimot size

MM03: SEW Movimot type, 0,33 kW
MM05: SEW Movimot type, 0,55 kW
MM07: SEW Movimot type, 0,75 kW
MM11: SEW Movimot type, 1,1 kW
(position is omitted for fixed speed motors)

H – Motor power

... kW: Motor power, kW
(position is omitted for variable speed motors
see position F)

I – Thermal protection

No: No thermal protection
TF: Thermal protection type TF
TH: Thermal protection type TH
(position is omitted for variable speed motors)

J – Hybrid cable

No: No hybrid cable
C: Hybrid cable included in SEW Movimot
(position is omitted for fixed speed motors)

K – Fieldbus

No: No fieldbus
A3: ASi fieldbus, no maintenance switch
P3: Profibus fieldbus, no maintenance switch
D3: DeviceNet fieldbus, no maintenance switch
A6: ASi fieldbus, maintenance switch
P6: Profibus fieldbus, maintenance switch
D6: DeviceNet fieldbus, maintenance switch
(position is omitted for fixed speed motors)