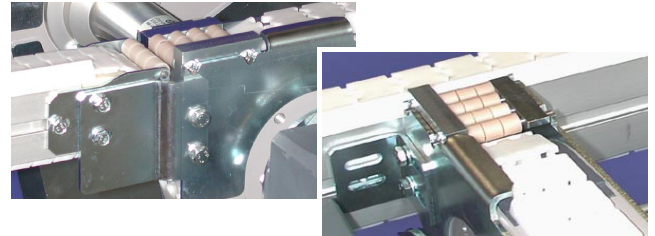


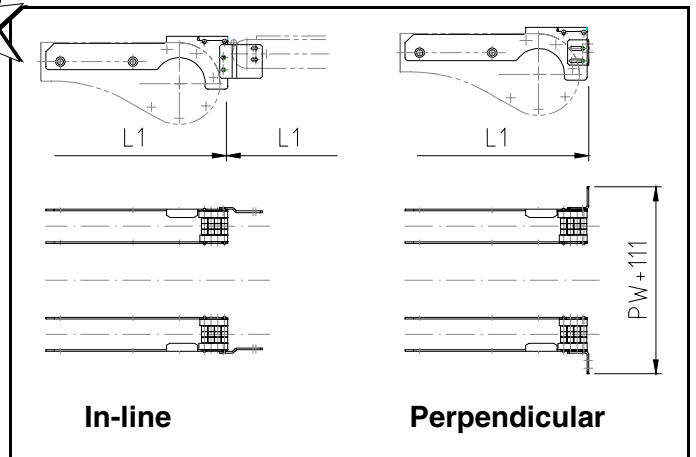
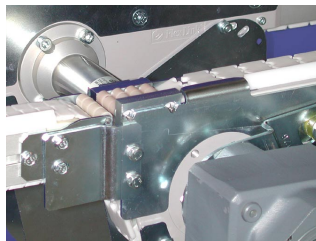
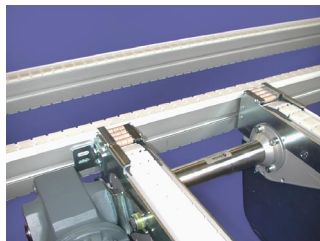


## New XT connecting kits

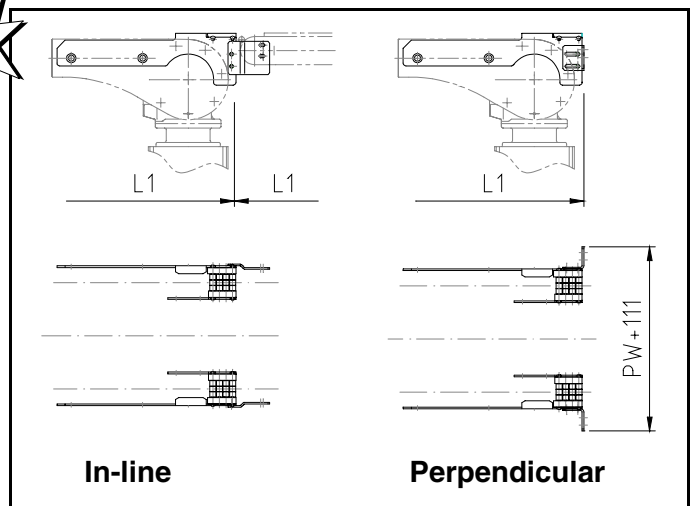
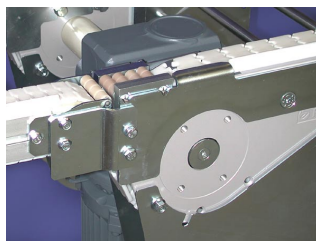
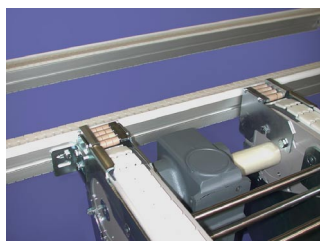
Two new connection kits have recently been released, see ordering information below. Page 2 shows an overview of all XT connecting kits available.



### Connecting kit – 5053199



### Connecting kit – 5053201



### Ordering information

Connecting kits 5053199 and 5053201 are delivered with two roller bridges and two sets of brackets which can be used for both the in line and perpendicular option.

# XT connecting kit overview

Outfeed to a perpendicular conveyor			
See figure 1		②	
		XT Conveyor	XT Light conveyor
①	XT Conveyor	5053199	5050034
	XT Light conveyor	5053199	5050034

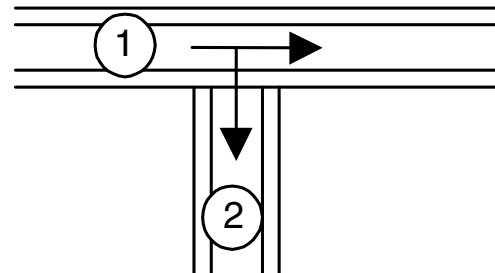


Figure 1

Infeed from a perpendicular conveyor			
See figure 2		②	
		XT Conveyor A B	XT Light conveyor
①	XT Conveyor	5053199 5053201	5050034
	XT Light conveyor	5053199 5053201	5050034

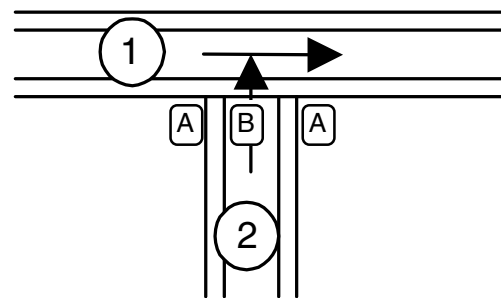


Figure 2

Type A, B see figure 4 below.

Conveyor in line with another conveyor			
See figure 3		②	
		XT Conveyor	XT Light conveyor
①	XT Conveyor A B	5049594* 5050564*	5053199 5053201
	XT Light conveyor	5053199	—

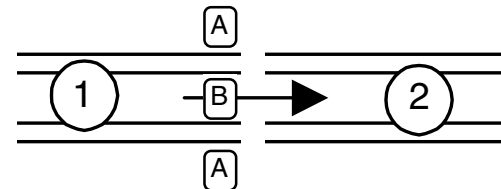


Figure 3

Type A, B see figure 4 below.

\* Connecting kit is included in delivery of a XTUC 51/52 module.

Depending on how the motor is positioned (see figure 4) you have to use different connecting kits depending on which case you are dealing with.

**A=Side-mounted motor, left and right**  
**B=Mid-mounted motor, standard and heavy**

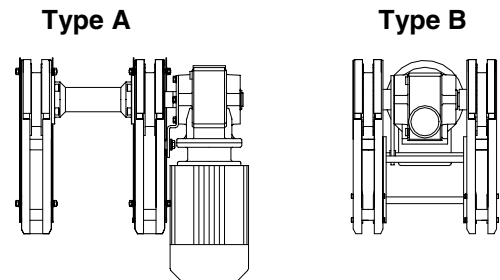


Figure 4