

FT-20-RD Centrifugal Feeder

Designed for Quiet, High Speed Feeding

Product Overview:

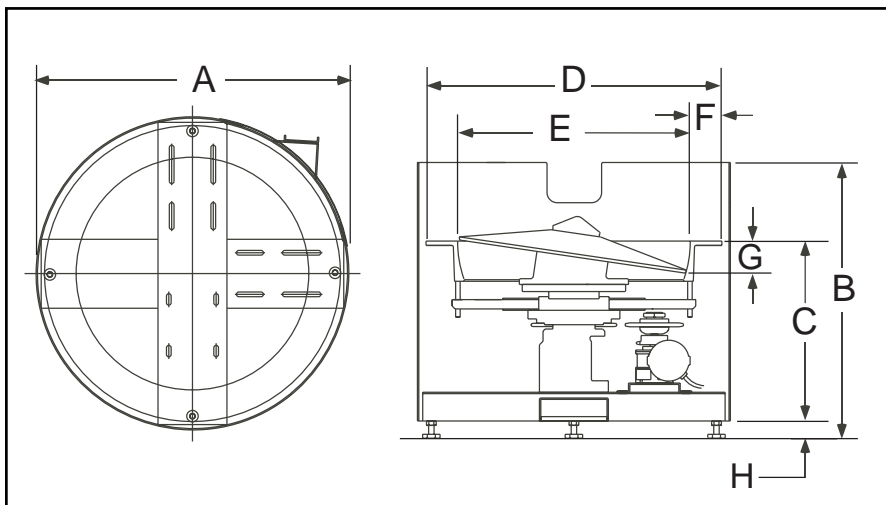
Hoppmann's standard FT-20 rigid disc centrifugal feeder is designed to feed a variety of products with its unique bowl design. Product is metered into the bowl and brought out to the bowl rim where a series of qualifiers gently orient the part for transfer to various downstream inline devices.

Product Specifications:

	ANSI	Metric
A. Outside Diameter	27.24"	692mm
B. Frame Height	24.25"	616mm
C. Discharge Height	15.66" ± 2"	398mm ± 51mm
D. Bowl Outside Diameter	25.75"	654mm
E. Bowl Inside Diameter	20.25"	514mm
F. Rim Width	2.75"	70mm
G. Bowl Depth	2.5"	64mm
H. Level Foot Adjustment	1.75"	44mm

Standard Models:

Part Number	FT201RLDSA	FT201RLASA
Motor Style	DC	AC
Motor Voltage	90V	180V
Horsepower	1/5 hp	1/5 hp



Standard Features:

- All stainless steel construction
- Square tooling frame
- FDA approved ABS vacuum formed disc
- Polyurethane foam bowl

Available Options:

- Polycarbonate covers
- Dual motor drive system
- Mechanical style level sensor (proximity sensor not included)
- Teflon hard-coated finished aluminium bowl