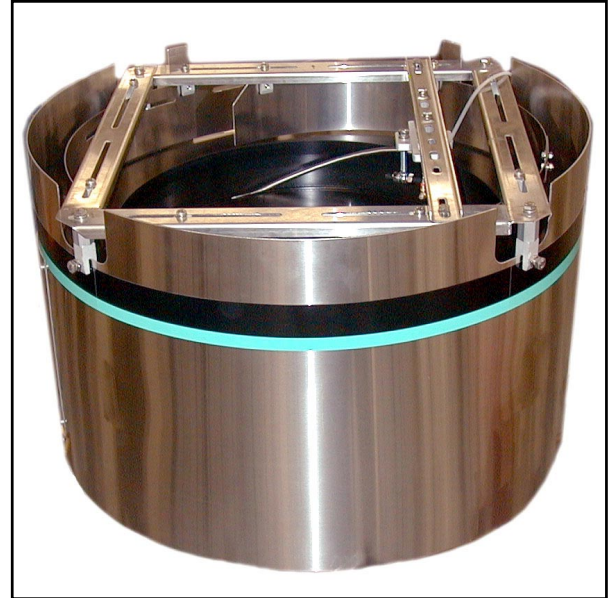


## FR-30 Centrifugal Feeder

Designed for Quiet, High Speed Feeding

### Product Overview:

Hoppmann's standard FR-30 feeds and orients a wide variety of parts utilizing a stationary loading ramp and the product's natural weight bias. The delivery rate varies from moderate to high speed depending on part characteristics. Its solid urethane bowl lends itself to machining for product profiling and those unique part feeding applications making the FR-30 a truly versatile and tailor-made feeding base.



### Product Specifications:

	ANSI	Metric
A. Outer Wall Diameter	40.50"	1029mm
B. Overall Height	26.25" ± 1"	667mm ±25mm
C. Discharge Height	18.5"	470mm
D. Bowl Outside Diameter	36.13"	918mm
E. Rim Width	3.63"	92mm

### Standard Models:

Part Number	FR30XXXDSA	FR30XXXASA
Motor Style	DC	AC
Motor Voltage	90V	240V
Horsepower	1/8 hp	1/8 hp
Total Equipment Weight	350 lbs.	350 lbs.

### Standard Features:

- All stainless steel construction
- Cast urethane bowl
- Square tooling frame

### Available Options:

- Air ramp
- Hinged covers

