

## FR-20 Centrifugal Feeder

Designed for Quiet, High Speed Feeding

### Product Overview:

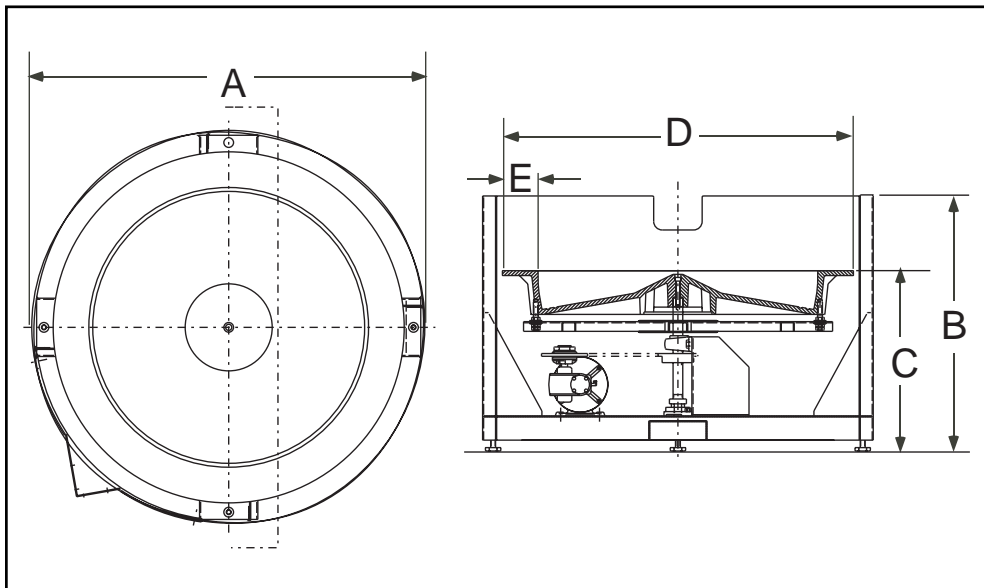
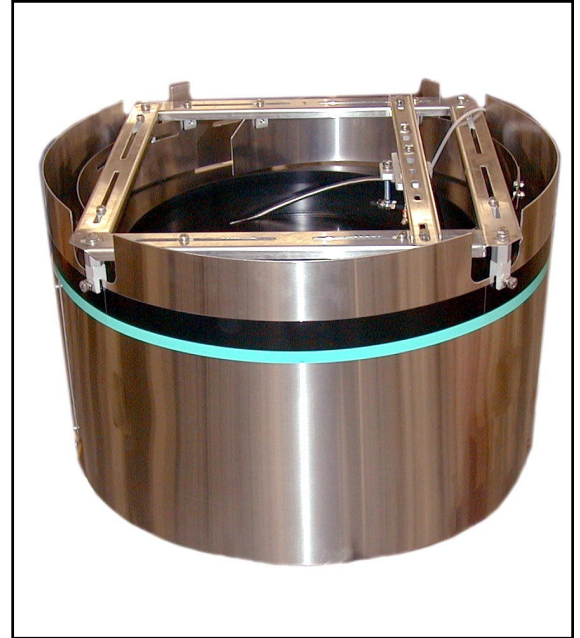
Hoppmann's standard FR-20 feeds and orients a wide variety of parts utilizing a stationary loading ramp and the product's natural weight bias. The delivery rate varies from moderate to high speed depending on part characteristics. Its solid urethane bowl lends itself to machining for product profiling and those unique part feeding applications making the FR-20 a truly versatile and tailor-made feeding base.

### Product Specifications:

	ANSI	Metric
A. Outer Wall Diameter	27.25"	693mm
B. Overall Height	24.25" ± 1"	615mm ±25mm
C. Discharge Height	17.5"	445mm
D. Bowl Outside Diameter	24.81"	631mm
E. Rim Width	2.32"	59mm

### Standard Models:

Part Number	FR20XXXDSA	FR20XXXASA
Motor Style	DC	AC
Motor Voltage	90V	180V
Horsepower	1/8 hp	1/8 hp
Total Equipment Weight	210 lbs.	210 lbs.



### Standard Features:

- All stainless steel construction
- Cast urethane bowl
- Square tooling frame

### Available Options:

- Air ramp
- Hinged covers