

EP-04/06 Elevating Prefeeder Designed for Floor Level Parts Loading

Product Overview:

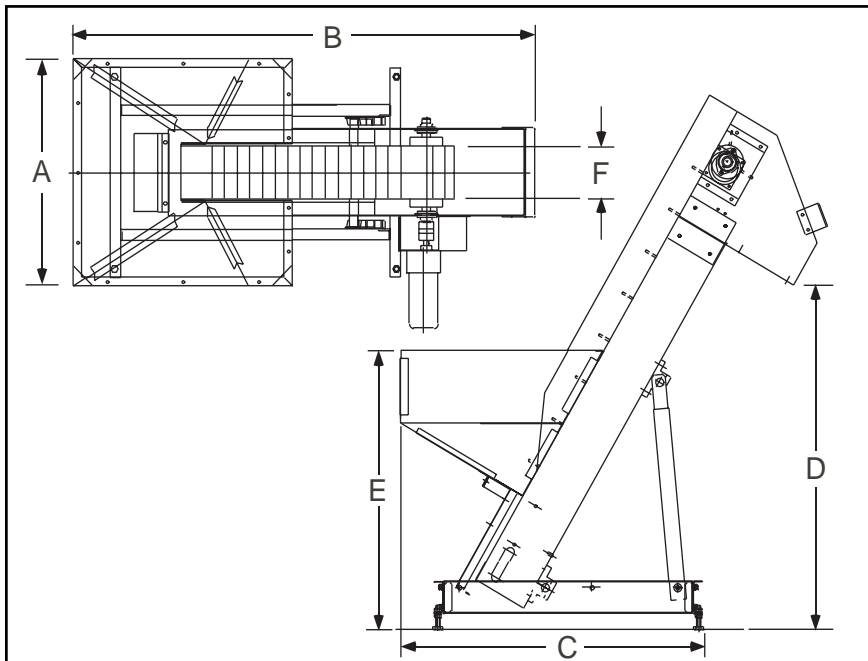
Hoppmann's standard EP-04/06 elevating prefeeder is designed to handle a variety of small, lightweight parts. Its four (4) cubic foot capacity hopper delivers product at an average belt speed of 35 feet per minute. The cleated elevator belt has a nominal cleat height of 1.50" and a cleat pitch of 6.00" allowing for maximum product loading. A heavy duty variable speed motor helps to ensure proper product metering.

Product Specifications:

	ANSI	Metric
A. Overall Width	26"	660mm
B. Overall Length	55"	1397mm
C. Lower Chassis Footprint	39.13"	994mm
D. Dump Height (Adjustable)	40"-46"	1016-1168mm
E. Hopper Load Height (4 cu. ft.)	34.5"	876mm
Hopper Load Height (6 cu. ft.)	39.5"	1003mm
F. Belt Width	6"	152mm

Standard Models:

Part Number	EP0406XDSA	EP0406XASA
Motor Style	DC	AC
Motor Voltage	130V	208-230/460V
Horsepower	1/8 hp	1/4 hp
Total Equipment Weight	250 lbs.	250 lbs.



Hoppmann Corporation continually strives to improve its products. Therefore, Hoppmann reserves the right to change or discontinue specifications and designs shown in this brochure without notice and without incurring obligation.

4/04

Standard Features:

- All stainless steel construction
- Belting is FDA/USDA approved white 1-ply solid woven polyester fabric with 1/16" thick white PVC coating and PVC cleats

Available Options:

- Elevator extensions
- Continuous welded hopper seams
- Elevator/hopper covers
- Washdown motor
- Mounted controller
- Casters
- Hopper extension for 6 cubic foot capacity
- Mechanical style level sensor (proximity sensor not included)
- Modular plastic chain upgrade
- Pneumatic part agitator (hopper)