



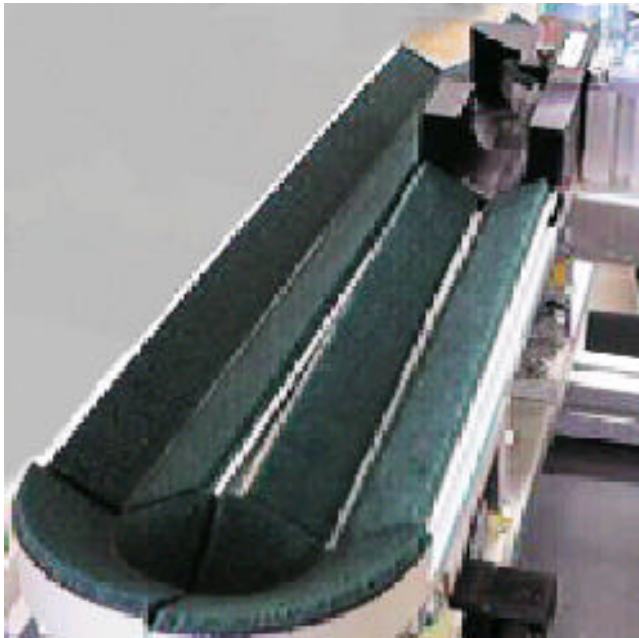
## C-Vibrator feeder

*FlexLink vibrator feeder C- formed for cylindrical products*

**?**  
PROBLEM To transport cylindrical products safely and with a minimum risk of transport damage.

**!**  
SOLUTION *FlexLink straight vibrator feeder for cylindrical products.*

This feeder can be integrated into a system. Driven by the vibrations of a fibre mat the products are transported carefully along the feeder. This system is designed for sensitive products.



**++**  
BENEFITS The unit ensures careful handling of the products as the products are transported along by vibrations transformed through a mat. This minimises the risk of transportation damage to the products which can line up without being damaged. The unit has a small radius of curvature which means that a very little space is required.

### Function

The unit consists of three main sections:

**V-profile** with a glued-on mat which carries the products along

The power source, an electromagnetic unit which produces vibrations

A stable support with legs, is **firmly** fastened to the floor.

The unit is also equipped with drip tray.

The unit has two straight sections each driven by one vibrator element. The two section are connected by two 90 degree curve sections. The unit is built to the shape of a "C".

The "C" shape ensures that the direction of transportation is retained, the rollers which are not aligned being returned to the preceding feeder section.

### Technical Specifications

Cylindrical product when curves are used: diameter 5 -35,  $L \leq 90$  mm

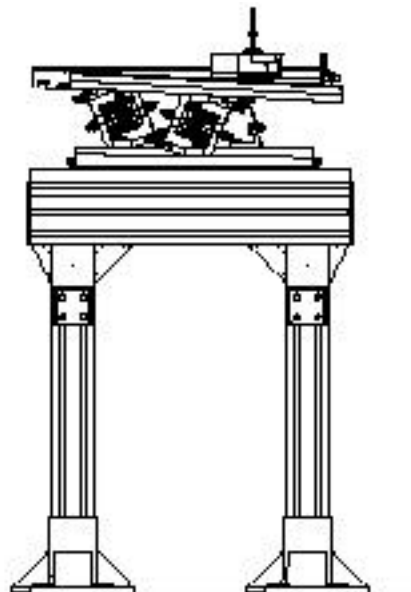
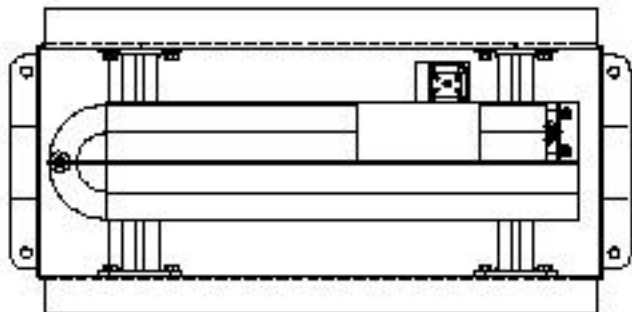
Cylindrical product when using curves: diameter 5-35,  $L \leq 45$  mm

Recommended maximum length: 1000 mm

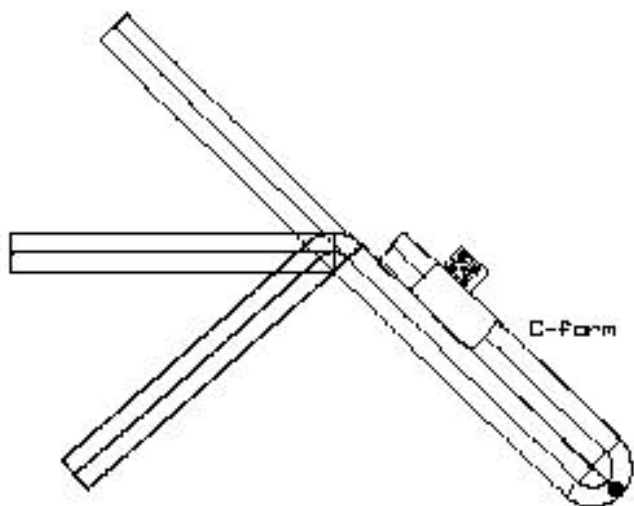
Recommended maximum height: Layout related.

Maximum speed: Product-related, max. 7 m/min

## C-Vibrator feeder



### Alternative solutions with curved sections



### Accessories

#### Curved sections

When changing direction a curved section is needed for connection to the next straight section.

- 15': 5300375
- 30': 5300376
- 45': 5300377
- 90': 5300378

#### V-transfer

To connect the vibrator feeder to a conveyor a V-transfer unit is needed.

- 3938940 (XLEJ 200)
- 5300638 (XLEJ 320)

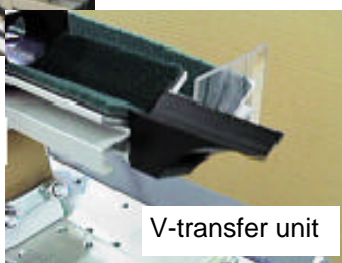
#### Plough unit wipe off

The rollers can either fall off the feeder straight out from the feeder end in to a box, or by using a wedge-shaped plough.

- Fixed plough, left hand 3935224
- Fixed plough, right hand 5300374



Curved section 90 de-



V-transfer unit

### Enquiries

Enquiries about the -FlexLink vibrator feeder for cylindrical products can be made at your local FlexLink office.

The unit is installed and tested on delivery.

FlexLink can supply complete turnkey systems or units without control systems.

In your enquiry please quote the publication number of the unit and state your technical specifications.

**Reference: "C"- vibrator feeder: 990320**

Originally printed in Swedish, publication no. 3936057

The information in this document is not binding. We reserve the right to make alterations without prior notification.