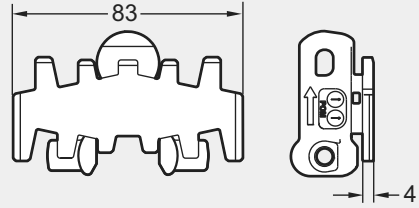
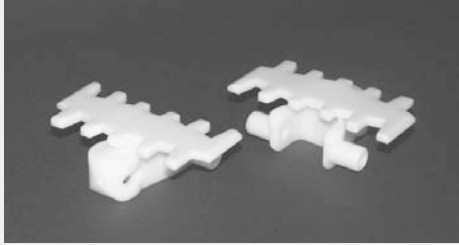


Conveyor system X85 - links and chains

Each link kit contains 10 links, 10 plastic pivots, and 10 stainless steel pins, unless otherwise specified. Material abbreviations: see page 3.

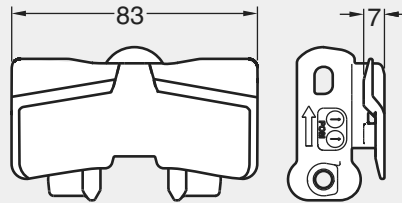
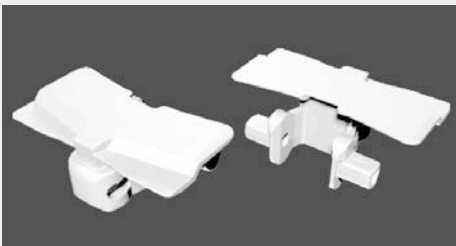
Plain chain



Chain type XBTP 5A85 B: max chain tension 300 N. Steel pin is zinc plated steel.

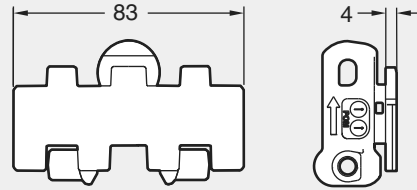
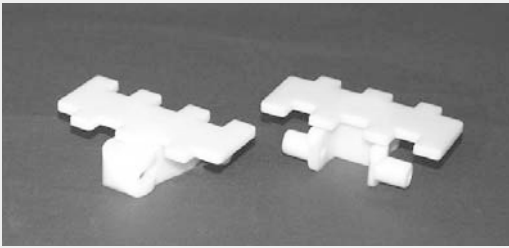
Chain	Link(s)	Link kit(s)	Dimensions	Link weight	Material, link	Material, pivot
XBTP 5A85	5059652	5110512		27 g	POM A	See link
XBTP 5A85 B	5110832	n.a.		27 g	POM B GY	POM B
5110432	5110431	5110529		27 g	POM B	See link
5110456	5110455	5110530		27 g	POM B polished	POM B
5110430	5110429	5110532		27 g	POM B ISD NAT	POM B B ISD
XBTP 5A85 E	5110427	5110527		27 g	POM A COND	See link
XBTP 5A85 C	5110484	5110533		27 g	POM B ultra wear resist	POM B
5115679	5115678				POM A (Black)	See link
5116324	5110832				POM A GY	See link

Closed top chain



Chain	Link(s)	Link kit(s)	Dimensions	Link weight	Material, link	Material, pivot
XBTP 5A85 A	5059685	5110513			POM A	See link

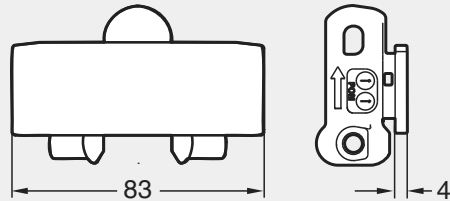
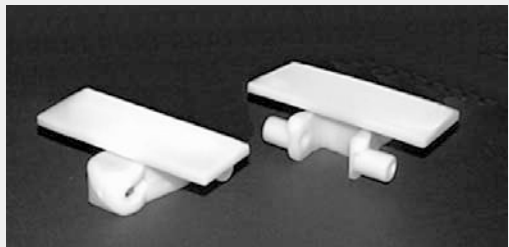
Plain chain



Minimum horizontal bend radius: 500 mm. Minimized gap between links.

Chain	Link(s)	Link kit(s)	Dimensions	Link weight	Material, link	Material, pivot
5110434	5110433	5110578		30 g	POM A	See link

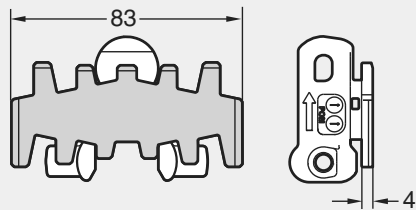
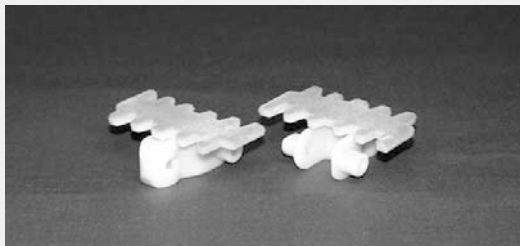
Plain chain



Minimum horizontal bend radius 700 mm.

Chain	Link(s)	Link kit(s)	Dimensions	Link weight	Material, link	Material, pivot
5110388	5110387	5110576		30 g	POM A	See link

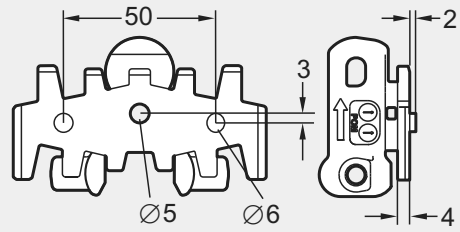
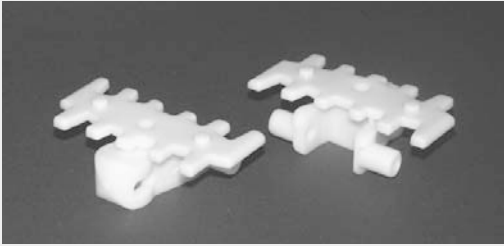
Flocked chain



For lightweight products with scratch sensitive surfaces. Perfume boxes, cosmetic packages, CD's, video cassettes, cigarette packages. Fibre material is PA66, glued to the link using epoxy glue.

Chain	Link(s)	Link kit(s)	Dimensions	Link weight	Material, link	Material, pivot
5110492	n.a.	n.a.			POM B	See link

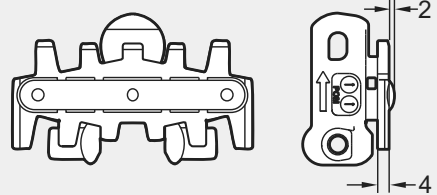
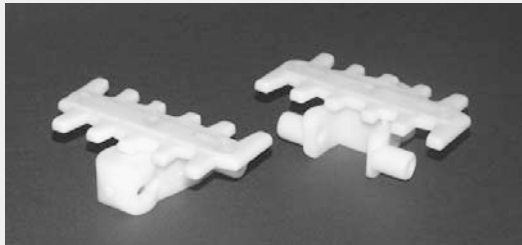
Universal chain



To attach customer specific cleat or fixture. The link has a hole for an M5 screw. An M5 nut will fit inside the link.

Chain	Link(s)	Link kit(s)	Dimensions	Link weight	Material, link	Material, pivot
XBTF 5A85 U	5110375	5110526		27 g	POM A	See link

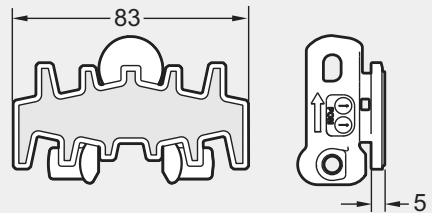
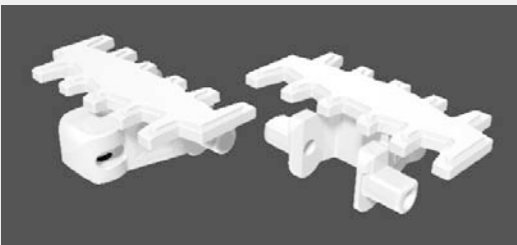
Friction top chain



When ordered as XBTP 5A85 F2, the chain is delivered with one plain link between each friction top link. Friction insert is polyether-polyamide. Slope <math><30^\circ</math>. Paper bags, cardboard boxes.

Chain	Link(s)	Link kit(s)	Dimensions	Link weight	Material, link	Material, pivot
XBTP 5A85 F	5110459	5110518		29 g	POM A	See link

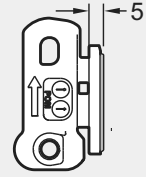
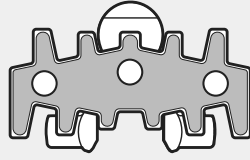
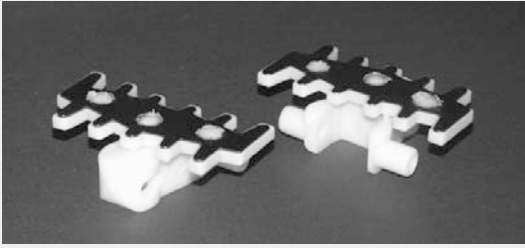
Flat top friction chain



Friction insert is polyether-polyamide. Slope <math><30^\circ</math>. Light goods: blister packs, small boxes, etc.

Chain	Link(s)	Link kit(s)	Dimensions	Link weight	Material, link	Material, pivot
XBTP 5A85 FA	5110378	5110528			POM A	See link

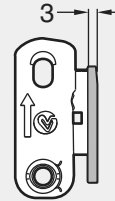
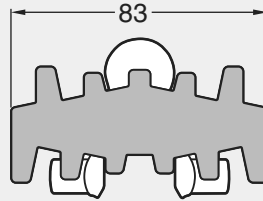
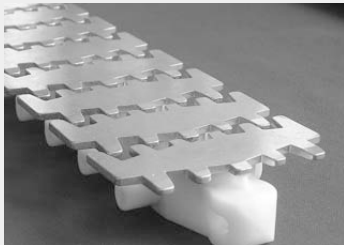
Steel top chain, fingered



Top surface is stainless steel. Cylindrical rollers. Cast-metal products. Accumulation.

Chain	Link(s)	Link kit(s)	Dimensions	Link weight	Material, link	Material, pivot
XBTP 5A85 TF	5110436	5110519		46 g	POM B + SS	POM B

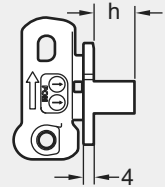
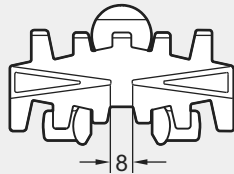
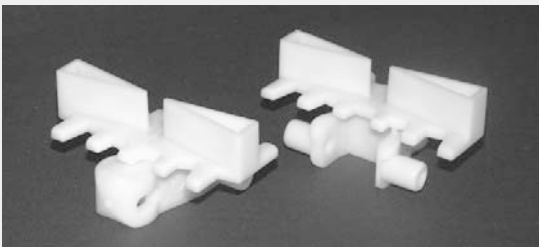
Steel chain



Electro-zincplated hardened steel (700HV1) throughout top part. Modification kits are required for end drive units. See instruction leaflet 6622461, and the FlexLink catalogue.

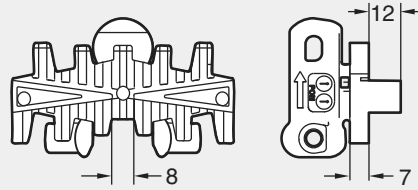
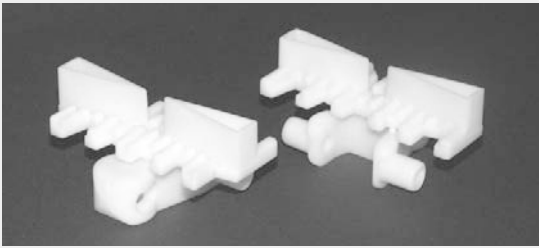
Chain	Link(s)	Link kit(s)	Dimensions	Link weight	Material, link	Material, pivot
5056849	5056847	5058301			POM B	See link

Cleated chain



Chain	Link(s)	Link kit(s)	Dimensions	Link weight	Material, link	Material, pivot
XBTF 5A85X15 A	5110372	5110516	h=15 mm	35 g	POM A	See link
XBTF 5A85X30 A	5110374	5110517	h=30 mm	43 g	POM A	See link

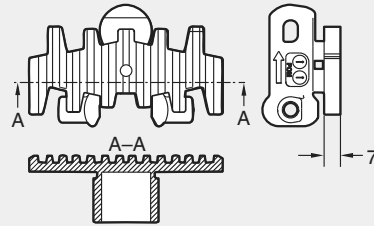
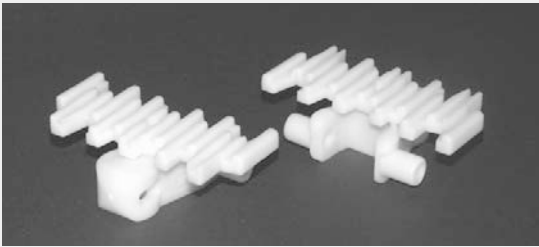
Cleated chain



Wet applications. Cleated chain consists of flat top links 5110394 combined with cleated links 5110393. Also see link type 5110394.

Chain	Link(s)	Link kit(s)	Dimensions	Link weight	Material, link	Material, pivot
5995237	5110393	5110536		38 g	POM A	PVDF
	5110394	5110561				

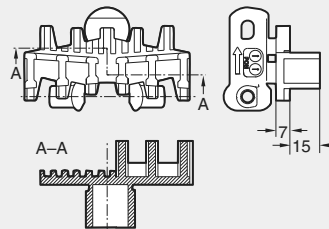
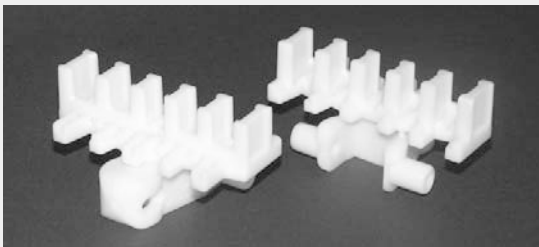
Plain chain with elevated surface



Wet applications.

Chain	Link(s)	Link kit(s)	Dimensions	Link weight	Material, link	Material, pivot
5110395	5110394	5110561		32 g	POM A	PVDF

Cleated chain

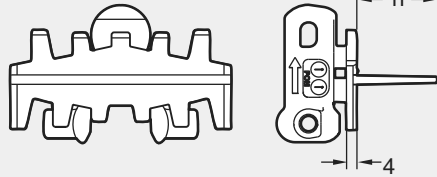
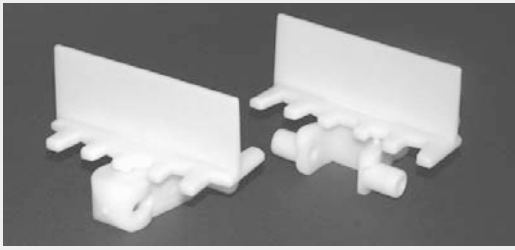


Wet applications. Cleated chain consists of flat top links 5110394 combined with cleated links 5110400. Also See link type 5110394.

Chain	Link(s)	Link kit(s)	Dimensions	Link weight	Material, link	Material, pivot
5995239	5110400	5110563		42 g	POM A	PVDF
	5110394	5110561				

Intro
X45
X45H
XS
XL
X65
XM
X85
X85X
XH
XK
X180
X180X
X300
X300X
XT
WL
IDX

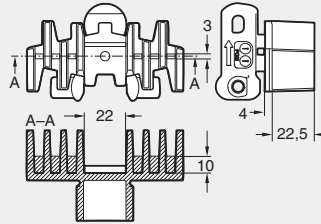
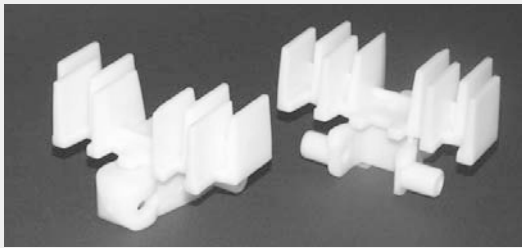
Cleated chain



Vertical transport. Rectangular products, sensitive to point load.

Chain	Link(s)	Link kit(s)	Dimensions	Link weight	Material, link	Material, pivot
5995240	5110401	5110564	h=15 mm	33 g	POM A	See link
5995241	5110403	5110565	h=20 mm	35 g	POM A	See link
5995229	5105216	5110566	h=30 mm	38 g	POM A	See link

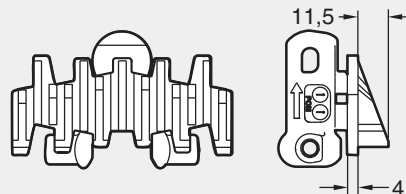
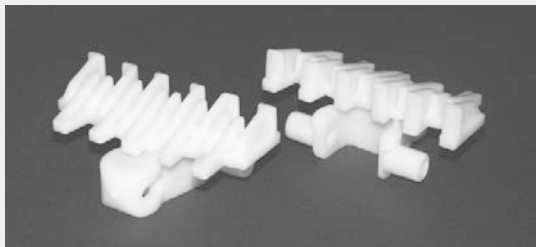
Cleated chain



Wet applications.

Chain	Link(s)	Link kit(s)	Dimensions	Link weight	Material, link	Material, pivot
5110410	5110404	5110567			POM A	See link

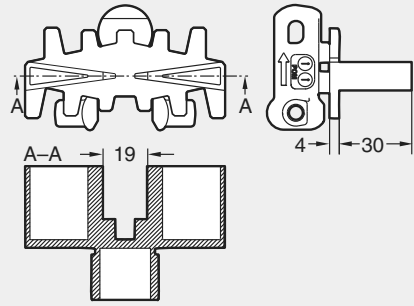
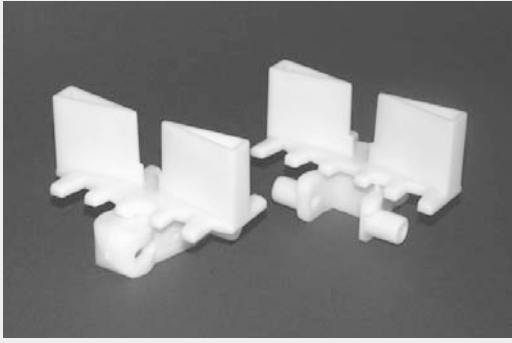
Cleated chain



Cardboard boxes. Suitable to reduce accumulation forces in slopes (10°- 20°).

Chain	Link(s)	Link kit(s)	Dimensions	Link weight	Material, link	Material, pivot
5995243	5110413	5110570		38 g	POM A	See link

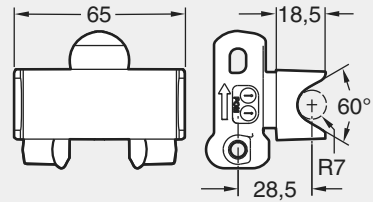
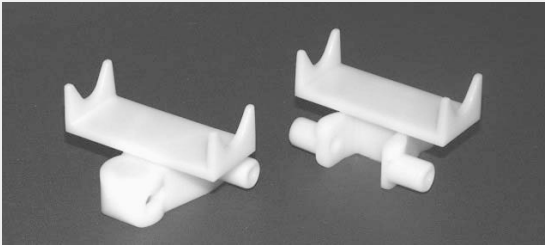
Cleated chain



Vertical transport. Crank shafts.

Chain	Link(s)	Link kit(s)	Dimensions	Link weight	Material, link	Material, pivot
5995244	5110414	5110571		42 g	POM A	See link

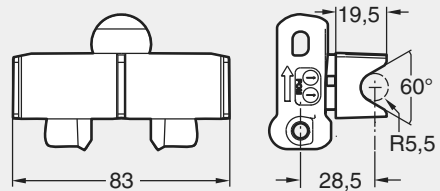
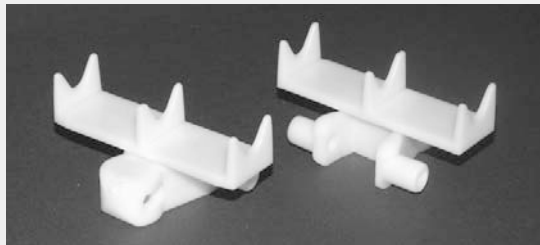
Cleated chain



Tubes placed in cleat. Can not be used in horizontal bends.

Chain	Link(s)	Link kit(s)	Dimensions	Link weight	Material, link	Material, pivot
5110418	5110417	5110572		28 g	POM A	See link

Cleated chain

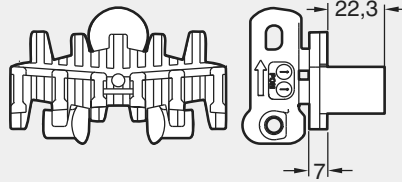
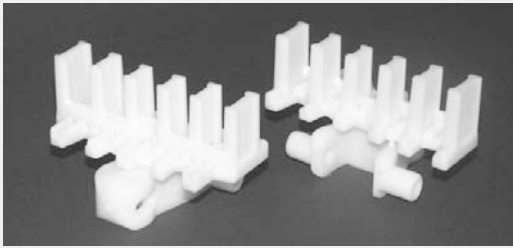


Tubes placed in cleat. Can not be used in horizontal bends.

Chain	Link(s)	Link kit(s)	Dimensions	Link weight	Material, link	Material, pivot
5110416	5110415	5110573		31 g	POM A	See link

Intro
X45
X45H
XS
XL
X65
XM
X85
X85X
XH
XK
X180
X180X
X300
X300X
XT
WL
IDX

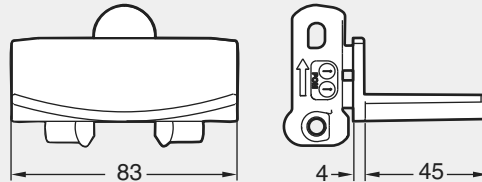
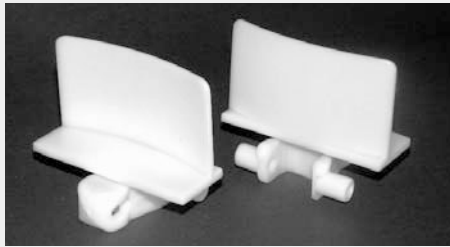
Cleated chain



Wet applications. Cleated chain consists of flat top links 5110394 combined with cleated links 5110397. Also See link type 5110394.

Chain	Link(s)	Link kit(s)	Dimensions	Link weight	Material, link	Material, pivot
5995238	5110397	5110562			POM A	See link
	5110394	5110561				

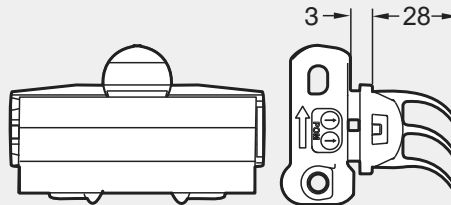
Cleated chain



Minimum horizontal bend radius 700 mm. Cleated chain consists of flat top links 5110387 combined with cleated links 5110389.

Chain	Link(s)	Link kit(s)	Dimensions	Link weight	Material, link	Material, pivot
5995236	5110389	5110575		30/45 g	POM A	See link
	5110387	5110576				

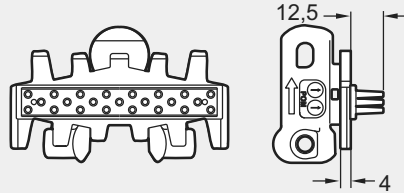
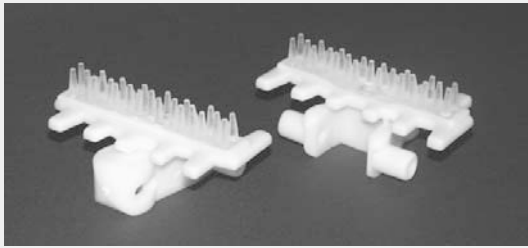
Flexible cleat chain



Max product weight for XBTE 5A85 C: 2,0 kg. Flexible cleat is thermo-plastic elastomer. Wedge transport. Soft, flexible surface for sensitive items. Link kit 5110515: 10 flexible cleat tops.

Chain	Link(s)	Link kit(s)	Dimensions	Link weight	Material, link	Material, pivot
XBTE 5A85 C	5059812	5110363		40 g	POM A	See link
		5110515				

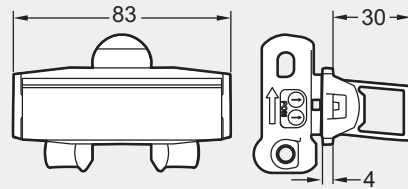
Flexible cleat chain



Max. product weight for XBTE 5A85 B: 3,0 kg. Flexible insert is polyether-polyamide. Wedge transport. Bags, bottles and cans. Horizontal transport of light products e.g. paper bags.

Chain	Link(s)	Link kit(s)	Dimensions	Link weight	Material, link	Material, pivot
XBTE 5A85 B	5110461	5110522		31 g	POM A	See link

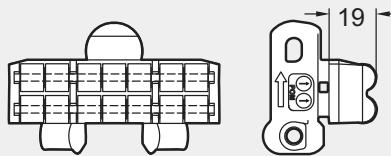
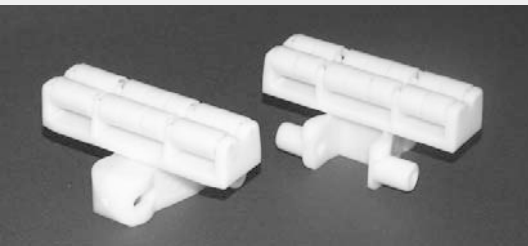
Flexible cleat chain



Max. product weight for XMTE 5 D: 4,0 kg. Flexible cleat is EPDM rubber. Wedge transport. Recommended for irregular shapes. Link kit 5056311: 10 flexible cleat tops.

Chain	Link(s)	Link kit(s)	Dimensions	Link weight	Material, link	Material, pivot
XBTE 5A85 D	5110381	5110582		66 g	POM B	See link
		5056311				

Roller top chain



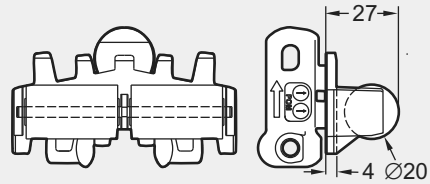
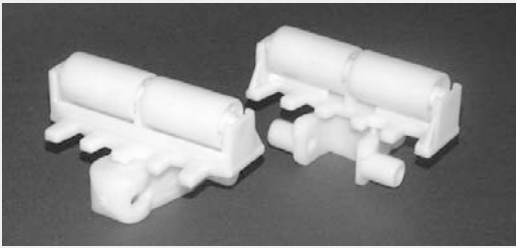
Link cannot be used together with plain links in conveyors with bends. Accumulation of parcels for lower pressure.

Chain	Link(s)	Link kit(s)	Dimensions	Link weight	Material, link	Material, pivot
XBTR 5A85	5110490	5110520		58 g	POM A	See link
5110488	5110487	5110534		58 g	POM B ISD NAT	POM B ISD

(3902819 Roller, order in multiples of 200 Pcs)

Intro
X45
X45H
XS
XL
X65
XM
X85
X85X
XH
XK
X180
X180X
X300
X300X
XT
WL
IDX

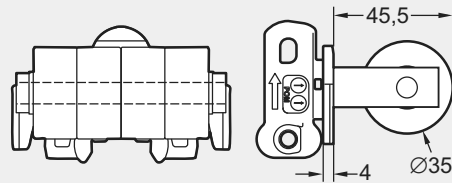
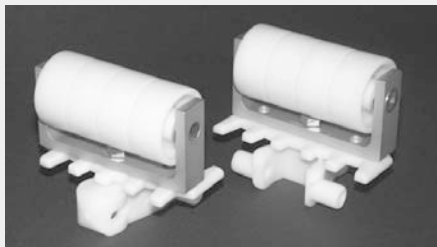
Roller cleat chain



Roller support items in steel and aluminium. Accumulation of parcels for lower pressure. Cardboard boxes.

Chain	Link(s)	Link kit(s)	Dimensions	Link weight	Material, link	Material, pivot
XBTF 5A85X23 R	5110439	5110521		59 g	POM A	See link

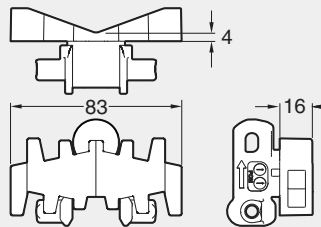
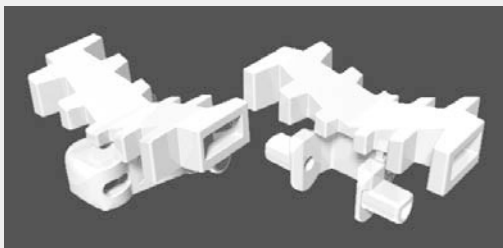
Roller cleat chain



R1 can not be ordered. Roller support items in steel and aluminium. Vertical transport of cardboard boxes. Link kit 5110583: 1 link 5110481 with pivot and steel pin.

Chain	Link(s)	Link kit(s)	Dimensions	Link weight	Material, link	Material, pivot
XBTF 5A85X46 R	5110481	5110583		143 g	POM A	See link

V-block chain



Chain	Link(s)	Link kit(s)	Dimensions	Link weight	Material, link	Material, pivot
5110386	5110385	5110577			POM A	See link