



WLX | WIDE BELT
CLEAN, SAFE CONVEYING,
ADVANCED PERFORMANCE



HYGIENE | PERSONAL SAFETY | TOTAL COST OF OWNERSHIP

ENHANCED PRODUCTION EFFICIENCY

FlexLink is a global provider of automated production flow solutions and the innovator of modern conveyor systems. For more than 30 years, our solutions have enabled manufacturers, machine providers and system integrators to take control of efficiency.

We are continuously making significant investments in R&D to satisfy market needs.

The new, innovative wide belt conveyor in stainless steel is safe, clean and it reduces the total cost of ownership. It's setting new standards in primary and secondary packaging processes for the food and personal product industries.



A close-up photograph of a blue perforated metal screen, likely a filter or separator, mounted on a white industrial machine. The screen is curved and shows a grid of small, circular holes. The machine's frame is visible on the right side.

WLX

WHEN YOUR PRODUCTS DECIDE

Easy to clean

- › State-of-the-art drainage
- › Good accessibility
- › No cavities or hollow bodies

Operational benefits

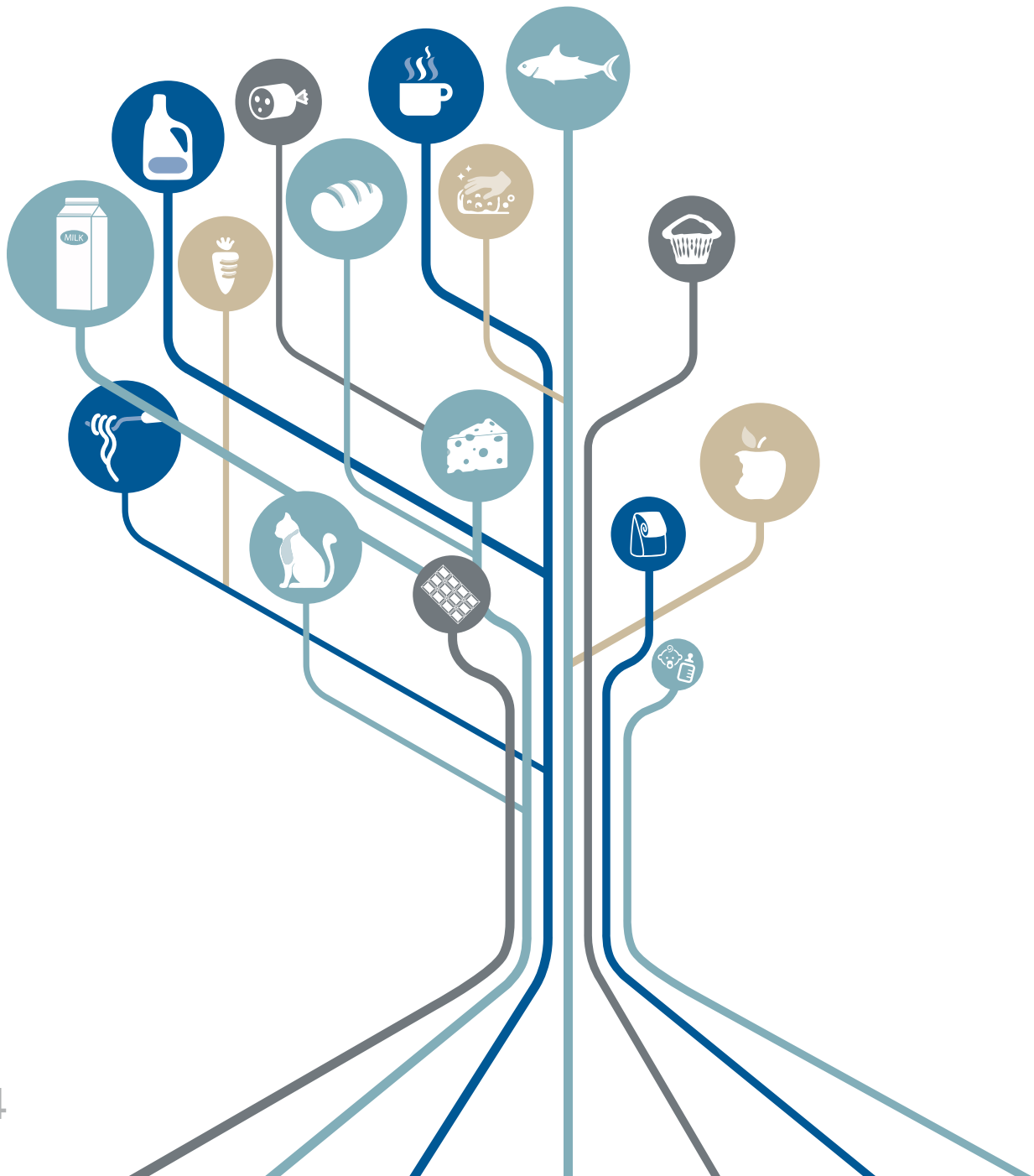
- › Safe
- › Low noise level
- › Ergonomic

Low cost of ownership

- › Standardized, easy to modify and expand
- › Long service life with minimum maintenance
- › Low water and power consumption

FOR WET AND DRY PROCESSES

The new modular belt conveyor is suitable for all industries where the requirements for hygiene and accessibility are particularly high. From packaged meat and dairy to bread and flour, the system assures trouble-free operation and long service life. Ready to be installed in any application area – from primary packaging to end of line.





Suitable packages

Pouches, standing pouches, bottles, gable tops, cartons, cases, bags, skins, trays and cases

A CLEAN CASE

The cleaning process for WLX is fast and easy, setting new standards for results and available process time. The design facilitates simple cleaning procedures and ensures a consistent result.

The entire design is remarkably clean with rounded corners and flat surfaces. Hollow bodies and crevices, where pathogens and contaminants tend to get trapped, have all been eliminated.

In addition, less water and detergents are needed, thus lowering costs and boosting sustainability.

VACUUM-CLEANING | STEAM-STERILIZATION | WATER-CLEANING





YOUR BENEFITS

Reduced cleaning time

- › Easy access to all parts of conveyor
- › Good drainage with elimination of corners and flat surfaces
- › Standard – unified cleaning instructions
- › Smooth and separated contact surfaces
- › Clean-in-place (CIP) ready

Food safety

- › Minimized risk of contamination
 - Easy, consistent cleaning
 - Bearings located outside the frame, food grade grease
- › No sharp corners, hollow bodies or cavities housing pathogens and contaminants.



LET'S PLAY IT SAFE

Operator safety has been prioritized by eliminating pinch points and sharp edges. During operation, the new conveyor is safe and ergonomic. For example, operators use integrated devices to raise the chain, which eliminates heavy lifting. Furthermore, the noise level is comfortably low, which contributes to a pleasant factory environment.





A SAFE INVESTMENT

For the operator

- › Safe to use and maintain
- › No pinch points
- › No heavy lifting to clean the chain
- › No sharp points or edges
- › Low noise level



GAIN PRODUCTION TIME

The WLX conveyor has a robust design and is quick to clean for operating convenience both in dry and wet environments, adding valuable production time. During wet cleaning processes, very little water and detergent is required, which helps keep operating costs down. Also, energy efficient components lower energy consumption and friction while providing sophisticated line control.

The standardized design and modularity considerably reduces ramp-up time and provides the ability to expand and adapt over time, increasing the versatility and overall efficiency of the line. You'll never wait long for spare parts either, since they are quickly supplied via our global distribution network.

TOTAL COST OF OWNERSHIP (TCO)

Improve production time

- › Quick to clean
- › Easy to use
- › Robust design

Trouble-free operation

- › Long service life
- › Low wear

Standardization

- › Best practices
- › Short ramp-up time
- › Global distribution and support

Sustainability

- › Low water and detergent consumption
- › Low power consumption
- › Operator safety



“Protecting the products, brand and operators allow us to be a more sustainable company.”



TECHNICAL CHARACTERISTICS

	Unit	WL374X	WL526X	WL678X
Frame width	mm	374	526	678
Belt width	mm	304	456	608
Horizontal plain bends	°	✓	✓	✓
Vertical bends	°	✓	✓	✓
Belt tension	N	1200	1200	1200
Maximum conveyor length	m	20	20	20
Maximum item weight	kg	30	30	30
Conveyor speed	m/min.	40	40	40

More technical information can be found in the Product Catalogue, or contact your local representative

GIVE YOUR PRODUCTION A COMPETITIVE EDGE!

FlexLink provides automated production flow solutions for manufacturing, assembly, test and packaging processes. With a global network of local offices and partners in more than 60 countries, you're never more than a handshake away.

Or a click:

www.flexlink.com

Australia
FlexLink Systems Pty Ltd
Mount Waverley VIC
T: +61-3-9542 4400
info.au@flexlink.com

Belgium
FlexLink Systems N.V.
Leuven
T: +32-(0)16-40 82 66
info.be@flexlink.com

Brazil
FlexLink Systems Ltda
Barueri SP
T: +55 11 4196-3400
info.br@flexlink.com

Canada
FlexLink Systems Canada, Inc.
Burlington, ON
T: +1-888-748-8677
info.ca@flexlink.com

China
FlexLink Automation
Shanghai
T: +86-(0)21-641 183 06
info.cn@flexlink.com

Czech Republic
FlexLink Systems
Praha
T: +420-226 202 215
info.cz@flexlink.com

Finland
FlexLink Systems
Helsinki
T: +358-40-658 3030
info.fi@flexlink.com

France
FlexLink Systems SAS
Elancourt cedex
T: + 33-(0)1 30 68 53 50
info.fr@flexlink.com

Germany
FlexLink Systems GmbH
Offenbach
T: +49-69-83832 0
info.de@flexlink.com

Hungary
FlexLink Systems Kft.
Budapest
T: +36-1-3994 295
info.hu@flexlink.com

India
FlexLink Systems India Pvt. Ltd.
Gurgaon
T: +91-124 427 8844
info.in@flexlink.com

Indonesia
PT FlexLink Systems
Jakarta
T: +62 21 3904335
info.id@flexlink.com

Italy
FlexLink Systems S.p.A.
Rivoli
T: +39-011-9518 411
info.it@flexlink.com

Japan
Tsubaki FlexLink Co.
Tokyo
T: +81(0)3-5793 7141
info.jp@flexlink.com

Malaysia
FlexLink Automation Sdn Bhd
Shah Alam
T: +603-7859 1889
info.my@flexlink.com

Mexico
FlexLink Systems, Mexico
T: +52-55 5336 4545
info.mx@flexlink.com

The Netherlands
FlexLink Systems B.V.
Hoofddorp
T: +31-(0)23-554 31 00
info.nl@flexlink.com

Poland
FlexLink Systems Polska Sp. z o.o.
Plewiska /k. Poznania
T: +48-61-654 7650
info.pl@flexlink.com

Russia
FlexLink Systems LLC
St. Petersburg
T: +7-(812)-318 00 75
info.ru@flexlink.com

Singapore
FlexLink Systems Pte Ltd
Singapore
T: +65-6842 5855
info.sg@flexlink.com

Spain
FlexLink Systems España, S.L.
Barcelona
T: +34-93-680 41 00
info.es@flexlink.com

Sweden
FlexLink AB, Sales Unit Nordic
Göteborg
T: +46-(0)31-337 31 00
info.se@flexlink.com

Thailand
FlexLink Systems Pte Ltd
Bangkok
T: +66-2-694 1717
info.th@flexlink.com

Turkey
FlexLink Systems Turkey
T: +90-232-2518833
info.tr@flexlink.com

United Kingdom
FlexLink Systems Ltd
Milton Keynes
T: +44-(0)1908-327 200
info.uk@flexlink.com

USA
Main office
FlexLink Systems, Inc.
Allentown, PA
T: +1 (610) 973-8200
info.us@flexlink.com

South
FlexLink Systems, Inc.
Greenville, SC
T: +1 (864) 335-0550

West
FlexLink Systems, Inc.
Richardson, TX
T: +1 (972)-708-1856