

mk Accumulation and Storage



Contents mk Accumulation and Storage



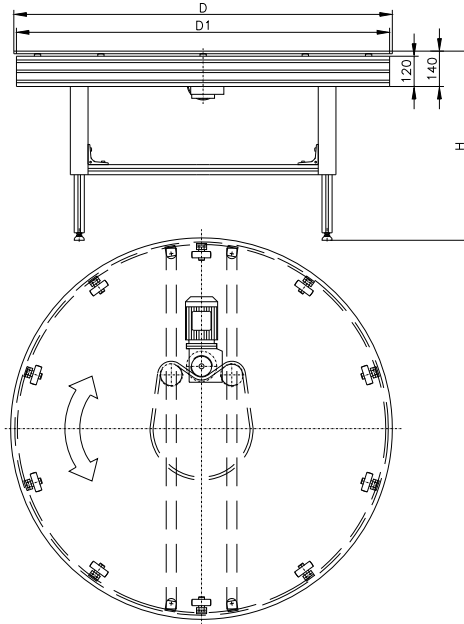
DTZ-P 2040

292

DTZ-P 2040

Turntable with Timing Belt driven

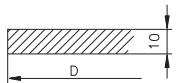
B12.01.001



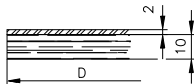
Dimensions – Technical Information		Notes
∅ Turntable	D1 = 750, 1000, 1250, 1500 mm	others on request
∅ Surface	Dmin = D1-30, Dmax = D1+100	
Surface Plate		see page 293
Drive Design	Timing Belt	specials on request
v const (rev/min)	1 - 8 rev/min	others on request
Side Rails		see page 276
Height H	H = 500 - 1500 mm	others on request

Surface Plates

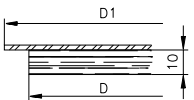
The following surface plates are our standards. Specials are possible on request.



Option 1.1
Laminated Surface



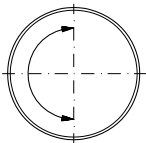
Option 1.2
Laminated Surface
with SS cover



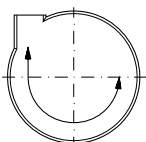
Option 1.3
Laminated Surface
with overhanging
SS cover
(for smaller products)

Construction, Product Flow

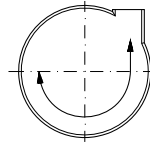
The following examples are standard configurations which can be combined. When designing diverters, the product weight and shape is critical to successful performance. The actual details of these diverters are therefore designed specifically to each customer's application. Because of our experience in the areas of material handling and conveying, mk can refer to numerous solutions offered in the past. Control integrated diverters are, therefore, also possible.



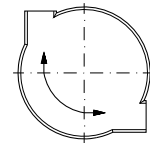
Construction A
Optional clock- or
counterclockwise



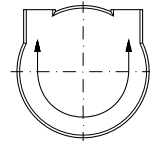
Construction B
Optional clock- or
counterclockwise,
chute left



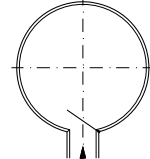
Construction C
Optional clock- or
counterclockwise,
chute right



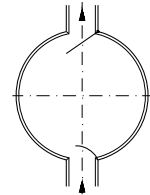
Construction D
Optional clock- or
counterclockwise,
chutes 90°



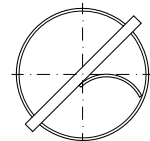
Construction E
Optional clock- or
counterclockwise,
chutes 180°



Construction F
Optional clock- or
counterclockwise,
chutes middle



Construction G
Optional clock- or
counterclockwise,
chutes 2 x middle,
with diverters



Construction H
Optional clock- or
counterclockwise,
adjustable diverter

Order Example:

DTZ-P 2040
D1 = 1000 mm
D = 1075 mm
H = 800 mm
Surface Option 1.1
v = 2 rev/min clockwise
Construction C